

Last Updated 22 July 2020

Last Updated 22 July 2020

Contents

Amazonas	3	Rio Grande do Norte	17
Bahia	5	Rio Grande do Sul	19
Belém and Vila do Conde	7	Santa Catarina	21
Fortaleza and Pecem	9	Santos	23
Paraíba	11	São Luís	25
Paranagua	13	São Sebastião	27
Rio de Janeiro	15	Uruguay	29
		Vitoria	31

Keep updated with our COVID-19 Port Restrictions Map



VISIT MAP

<https://tinyurl.com/wilhelmsencovid19>

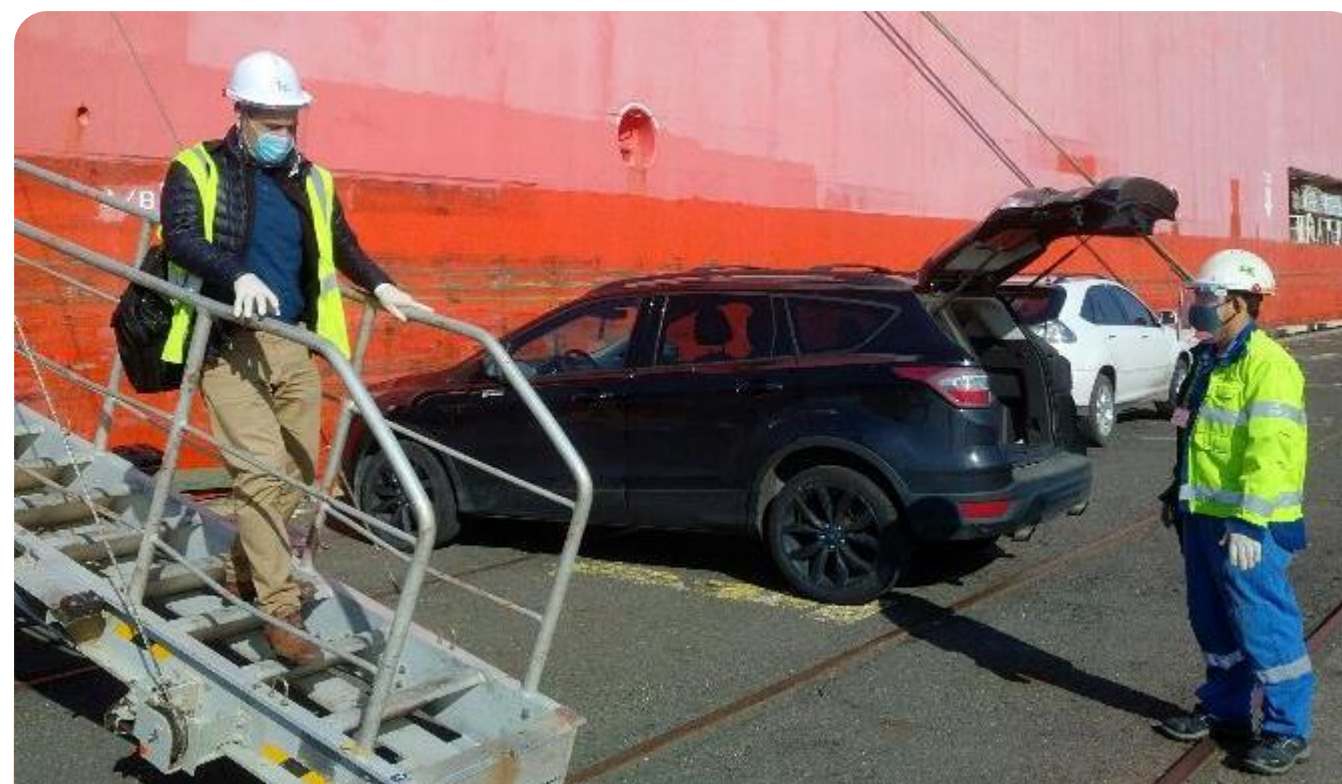
Disclaimer: This communication has been prepared for general information only. To the maximum extent permitted by law, Wilhelmsen and its affiliated companies, its and their employees, directors, agents, contractors (of any tier) and partners shall not be liable for any loss, claim, charge, damage, liability or damages howsoever arising in connection with the information even if advised of the possibility of damages. The use of the information shall be at your sole risk. Information contained herein comes with no representation or warranty (express or implied) and specifically is not represented or warranted to be correct, complete, accurate or up to date. The information is provided on an “as is” and “as available” basis and is not intended to be relied upon in any way. You shall be solely responsible for the selection, use, efficiency and suitability of the information.

UPDATED
ON:
17 JULY
2020

Crew Change Requirements for Amazonas

PREREQUISITES

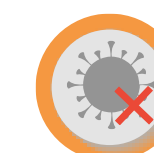
For those countries that do not have VISA exemption agreement with Brazil, it will be required that the Seaman's Book of the crewmember be issued by a Country signatory of ILO Conv 185



Disembarkation



OPL is allowed.



Disembarking crew are to provide confirmation that they are free of any COVID-19 symptoms for the past 15 days. Vessel's master to provide official declaration, medical examination and rapid test should be carried out.

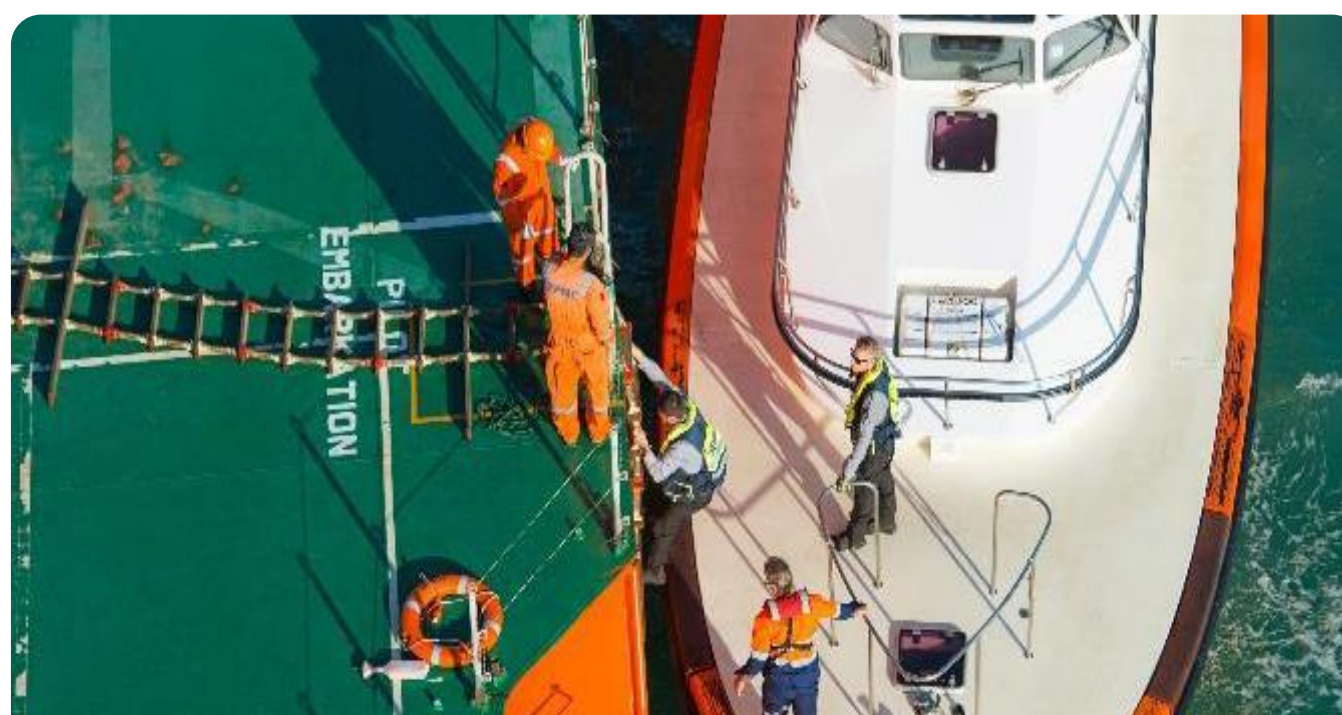


Wilhelmsen Ships Agency will arrange transportation from vessel to airport in specifically designated vehicles.

Brazil Now Open For Crew Change

With dynamic regulations surrounding crew change, it can be cumbersome trying to stay on top of all the latest changes and keeping track of all the documentation requirements.

And that's what we are here for – we've got your backs.



Embarking Crew



OPL is allowed



Embarking crew members must carry with them (and send to Wilhelmsen Ships Agency in advance) a medical report that states they are in good health condition and have been tested negative for COVID-19, before getting on the flight to Brazil.



Wilhelmsen Ships Agency will arrange transportation from airport to vessel or hotel in specifically designated vehicles



Travel Arrangements for Crew Members



No VISAs are issued in Brazil. The seafarers must hold a valid seaman's book recognized by ILO Convention. OK-TO-BEARD issued by the Agent and the Crew Employment Contract are required before on-signer arrival at São Paulo (GRU).

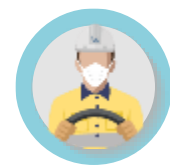


Main international airlines are flying to São Paulo (GRU) or to Rio de Janeiro (GIG) in Brazil. From these airports, a domestic leg to Manaus (MAO) airport is possible.

All seafarer land transportation needs to be carried out in specific vehicles that adhere to the following conditions:



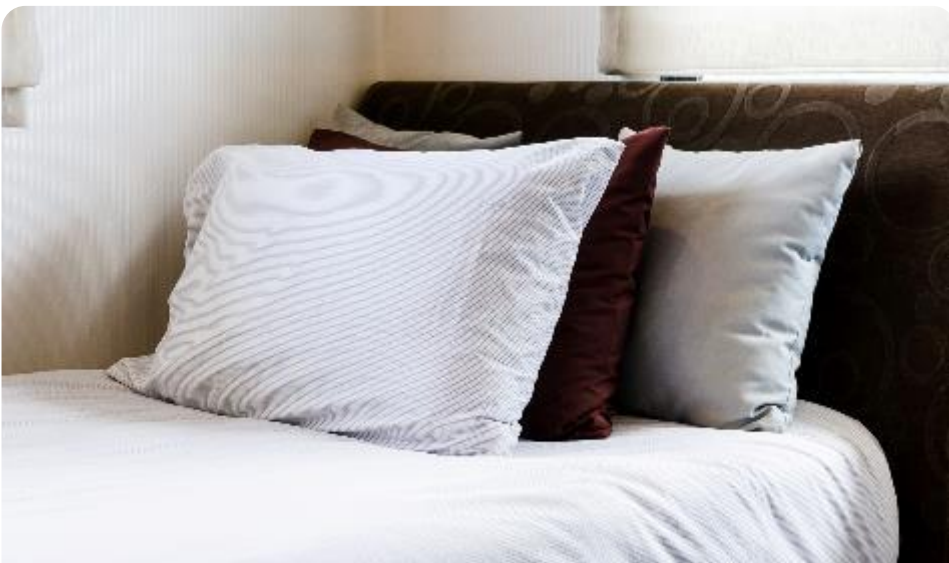
Max transport capacity of 10 pax, to adhere to social distancing safety measures



The driver and all passengers must wear full PPE at all times



The vehicle is only used to transport seafarers



Hotel Accommodation for Crew Members



Hotel stays can be arranged for both on-signers and off-signers if necessary.



Keep updated with the latest port restrictions on our COVID-19 Port Restrictions Map



Note: Recommended to view on desktop

<https://tinyurl.com/wilhelmsencovid19>

VISIT MAP

Contact Us

Wilhelmsen Ships Service do Brasil Ltda

Phone: +55 21 996 402 451

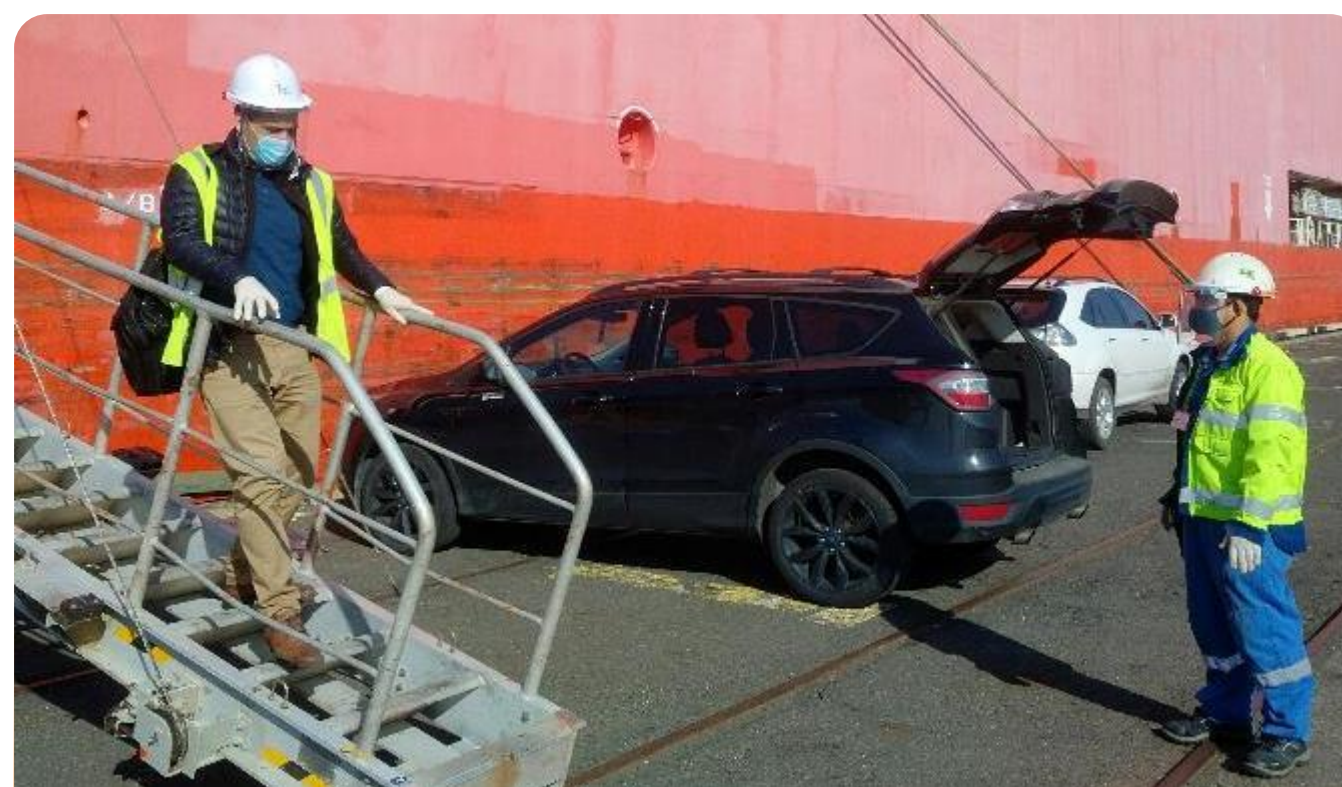
E-mail: wss-rio-shipsagency@wilhelmsen.com

UPDATED
ON:
17 JULY
2020

Crew Change Requirements for Bahia

PREREQUISITES

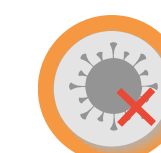
For countries that do not have VISA exemption agreement with Brazil, seafarers must hold a valid seaman's book recognized by ILO Convention 185



Disembarkation



OPL is not allowed



Disembarking crew are to provide confirmation that they are free of any COVID-19 symptoms for the past 14 days. Vessel's master need to provide official declaration, medical examination and rapid test will be carried out on board.



Wilhelmsen Ships Agency will arrange for transportation from vessel to airport in specifically designated vehicles

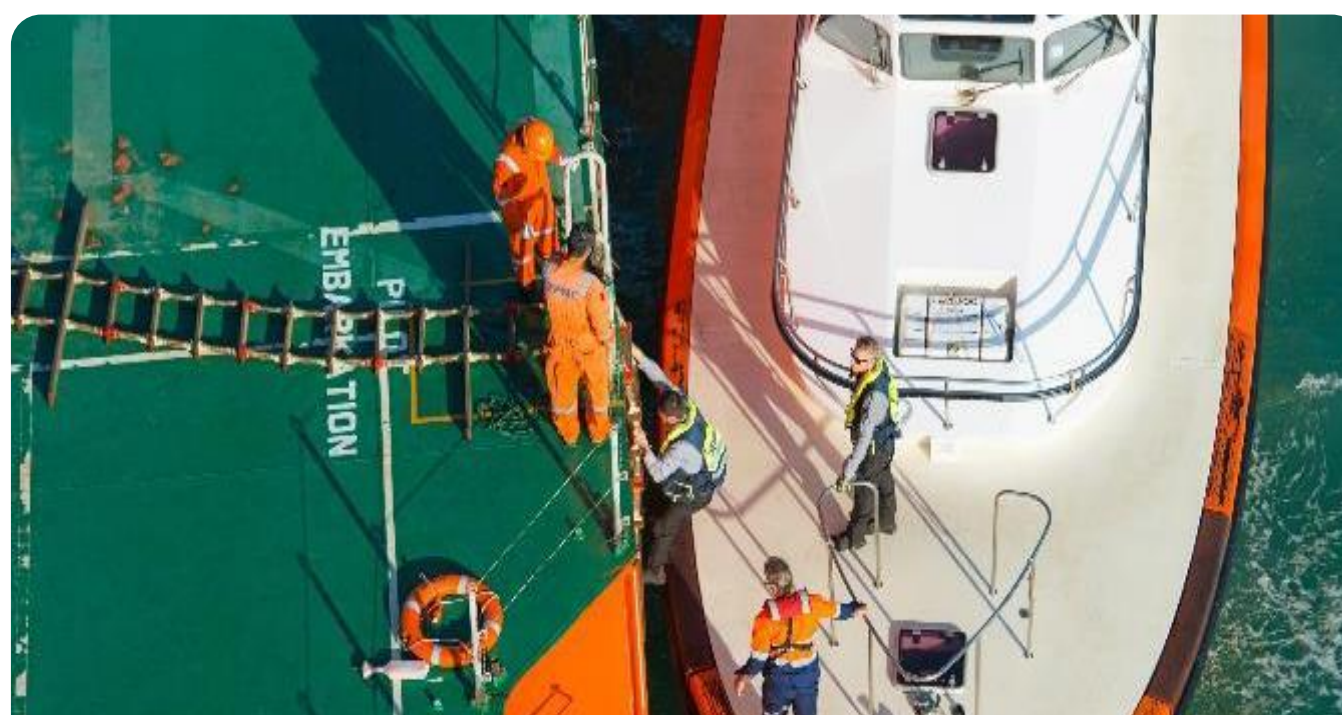


Hotel stays will be subjected to local authorities' analysis on a case by case basis.

Brazil Now Open For Crew Change

With dynamic regulations surrounding crew change, it can be cumbersome trying to stay on top of all the latest changes and keeping track of all the documentation requirements.

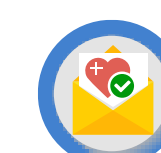
And that's what we are here for – we've got your backs.



Embarking Crew



OPL is not allowed



Embarking crew members must carry with them (and send to Wilhelmsen Ships Agency in advance) a medical report that states they are in good health condition and have been tested negative for COVID-19, before getting on the flight to Brazil.



Wilhelmsen Ships Agency will arrange for transportation from airport to hotel or vessel in specifically designated vehicles



Travel Arrangements for Crew Members



No VISAs are issued in Brazil. The seafarers must hold a valid seaman's book recognized by ILO Convention. OK-TO-BE-BOARD issued by the Agent and the Crew Employment Contract are required before on-signer arrival at São Paulo (GRU).

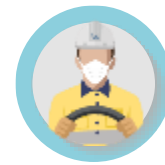


Main international airlines are flying to São Paulo (GRU) or to Rio de Janeiro (GIG) in Brazil. From these airports, a domestic leg to Salvador (SSA) airport is possible.

All seafarer land transportation needs to be carried out in specific vehicles that adhere to the following conditions:



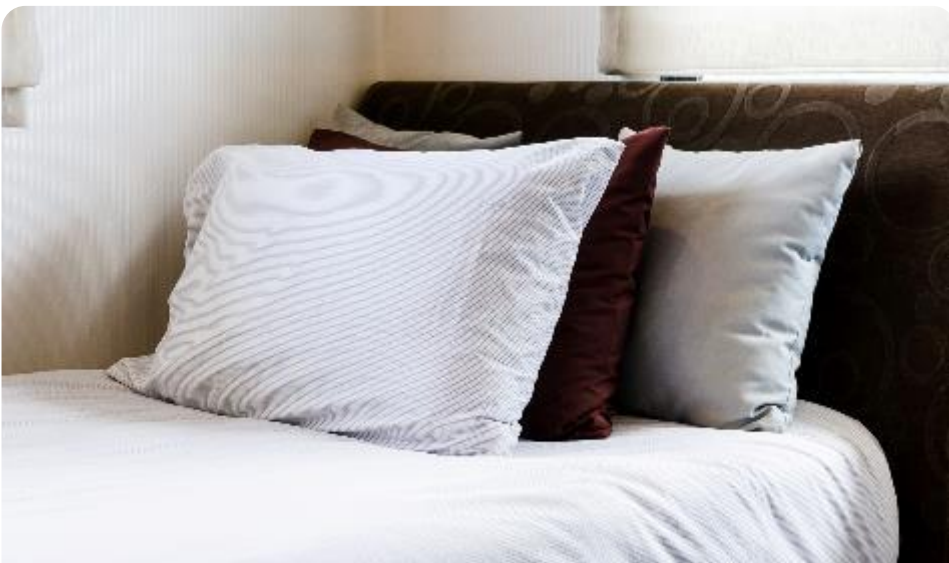
Max transport capacity of 10 pax, to adhere to social distancing safety measures



The driver and all passengers must wear full PPE at all times



The vehicle is only used to transport seafarers



Hotel Accommodation for Crew Members



On-signers: If necessary, check with authorities for authorization before crew arrival.

Off-signers: If necessary, check with authorities for authorization before crew disembarkation.



Keep updated with the
latest port restrictions
on our COVID-19
Port Restrictions Map



Note: Recommended
to view on desktop

<https://tinyurl.com/wilhelmsencovid19>

VISIT MAP

Contact Us

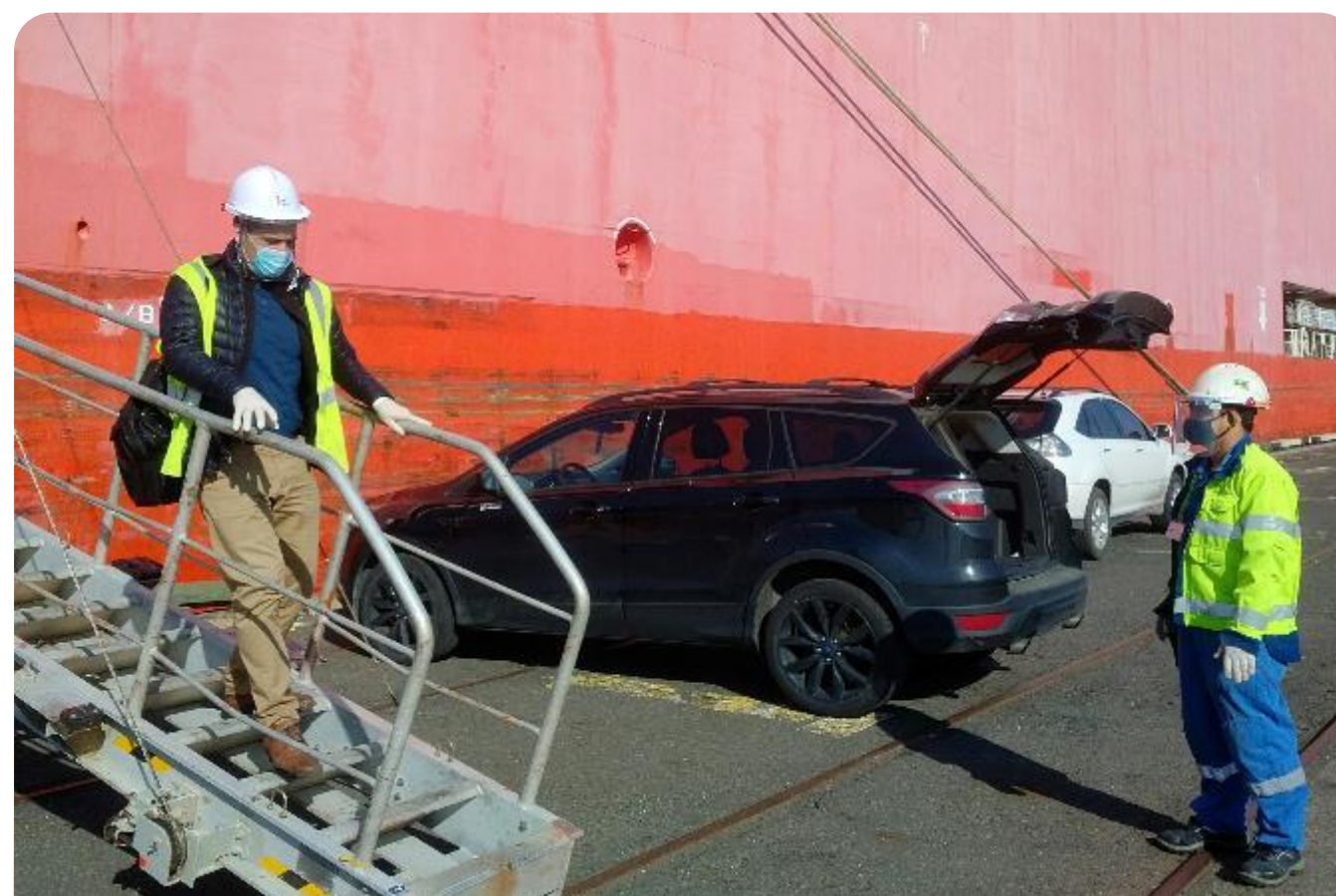
Wilhelmsen Ships Service do Brasil Ltda

Phone: +55 21 996 402 451

E-mail: wss-rio-shipsagency@wilhelmsen.com

PREREQUISITES

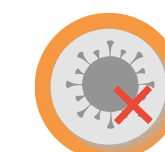
Currently, there are no restrictions on types of vessels allowed. Application is required for off-signers.



Disembarkation



OPL is allowed



Disembarking crew to provide confirmation that they are free of any COVID-19 symptoms for the past 14 days. vessel's master to provide official declaration, and rapid test should be carried out.



Hotel stays are not recommended by Authorities - it is preferable that the off-signer goes straight to the airport for flight connection. This will vary on a case by case, port to port basis.



Wilhelmsen Ships Agency will arrange for transportation from vessel to airport in specifically designated vehicles.

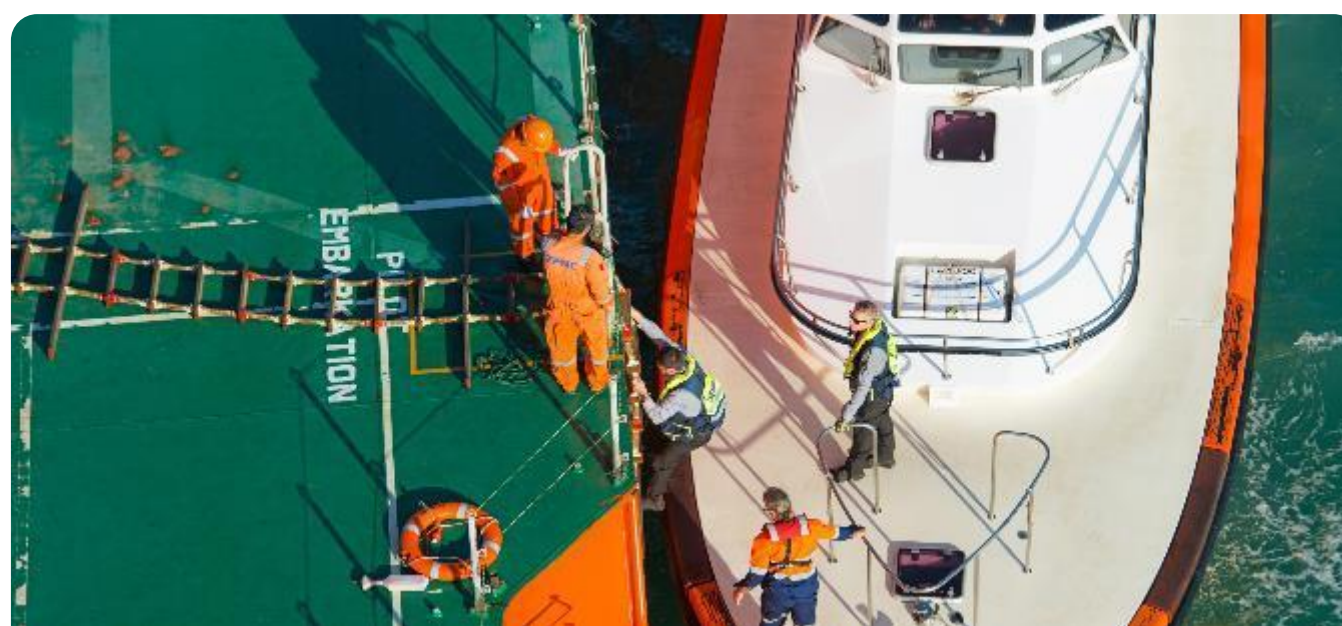


Precautionary measures are taken for launch crew to avoid close contact with disembarking crew

Brazil Now Open For Crew Change

With dynamic regulations surrounding crew change, it can be cumbersome trying to stay on top of all the latest changes and keeping track of all the documentation requirements.

And that's what we are here for – we've got your backs.



Embarking Crew



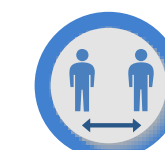
OPL is allowed



Wilhelmsen Ships Agency will arrange transportation from airport to the hotel or vessel in specifically designated vehicles



Only designated hotels are to be used and 14 days of quarantine is mandatory. However, if rapid test is conducted and results are negative, quarantine period can be reduced to 7 days.



Precautionary measures are taken for launch crew to avoid close contact with embarking crew



Travel Arrangements for Crew Members



No VISAs are issued in Brazil. The seafarers must hold a valid seaman's book recognized by ILO Convention. OK-TO-BOARD issued by the Agent is required too.

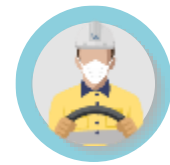


Main international airlines are flying to São Paulo (GRU) or to Rio de Janeiro (GIG) in Brazil. From these airports, a domestic leg to Belém (BEL) International Airport is possible.

All seafarer land transportation needs to be carried out in specific vehicles that adhere to the following conditions:



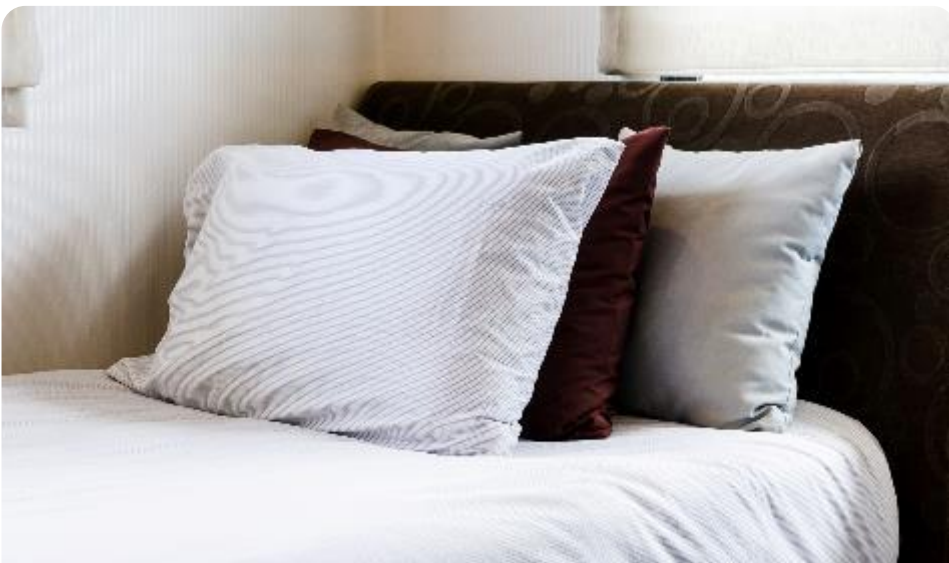
Max transport capacity of 10 pax, to adhere to social distancing safety measures



The driver and all passengers must wear full PPE at all times.



The vehicle is only used to transport seafarers



Hotel Accommodation for Crew Members



On-signers: Only designated hotels to be used. 14 days of quarantine is mandatory.



Off-signers: Hotel stays not recommended by the authorities. Preferably to go straight to the airport for flight connections



Keep updated with the latest port restrictions on our COVID-19 Port Restrictions Map



Note: Recommended to view on desktop

<https://tinyurl.com/wilhelmsencovid19>

VISIT MAP

Contact Us

Wilhelmsen Ships Service do Brasil Ltda
Phone: +55 21 996 402 451
E-mail: wss-rio-shipsagency@wilhelmsen.com



Brazil Now Open For Crew Change

With dynamic regulations surrounding crew change, it can be cumbersome trying to stay on top of all the latest changes and keeping track of all the documentation requirements.

And that's what we are here for – we've got your backs.

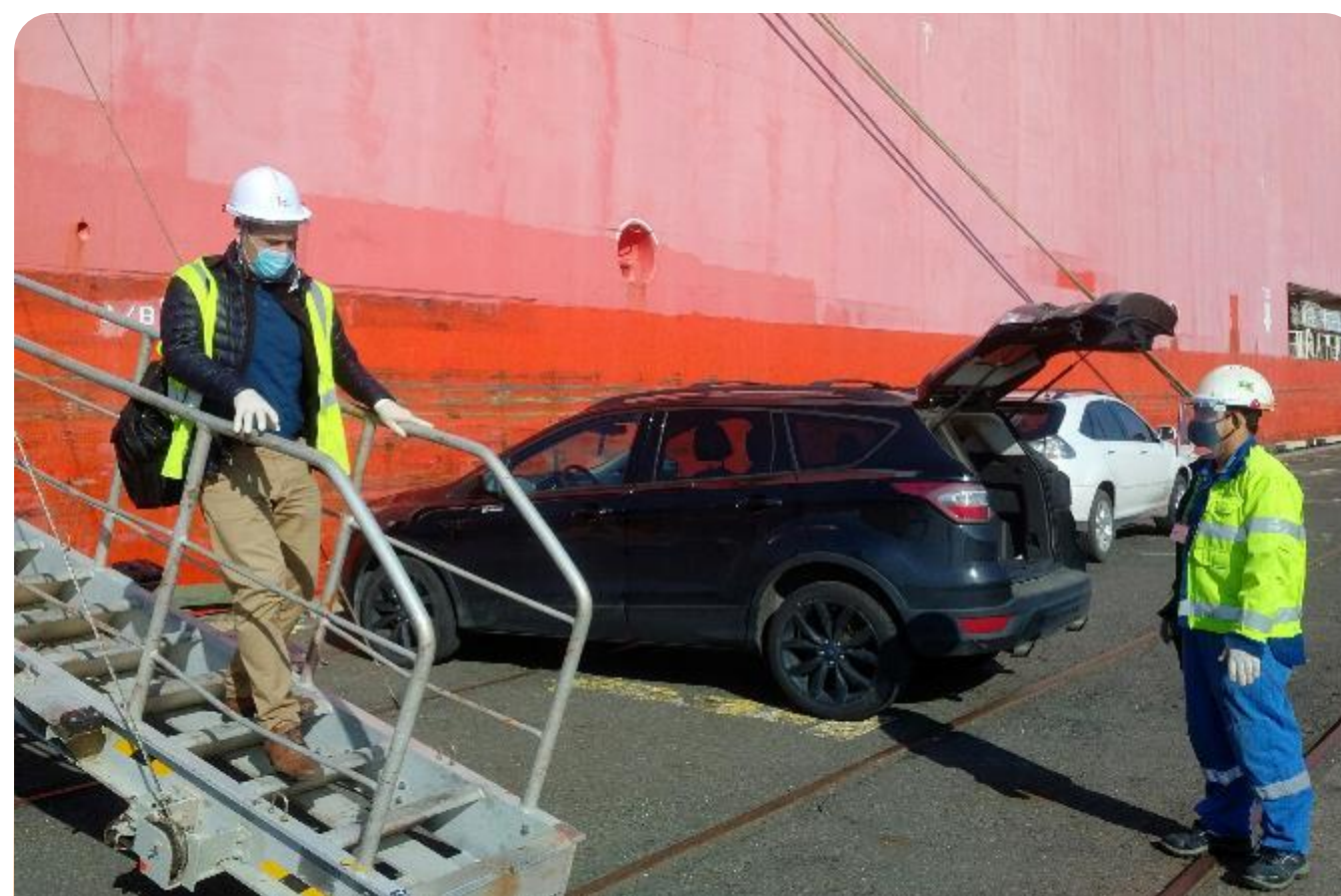
**UPDATED
ON:
17 JULY
2020**

Crew Change Requirements for Fortaleza and Pecem

Ships Agency

PREREQUISITES

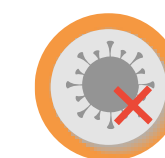
Crew are required to hold Seaman's book issued from ILO 185 signatory countries. For crew members holding Seaman's book issued from ILO 108 or travellers not holding Seaman's book, but are exempted of Business Visa, can embark using their passports. Currently, there are no restrictions on type of vessel.



Disembarkation



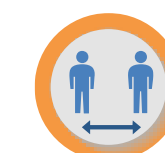
OPL is allowed, once all health regulation duly complied with



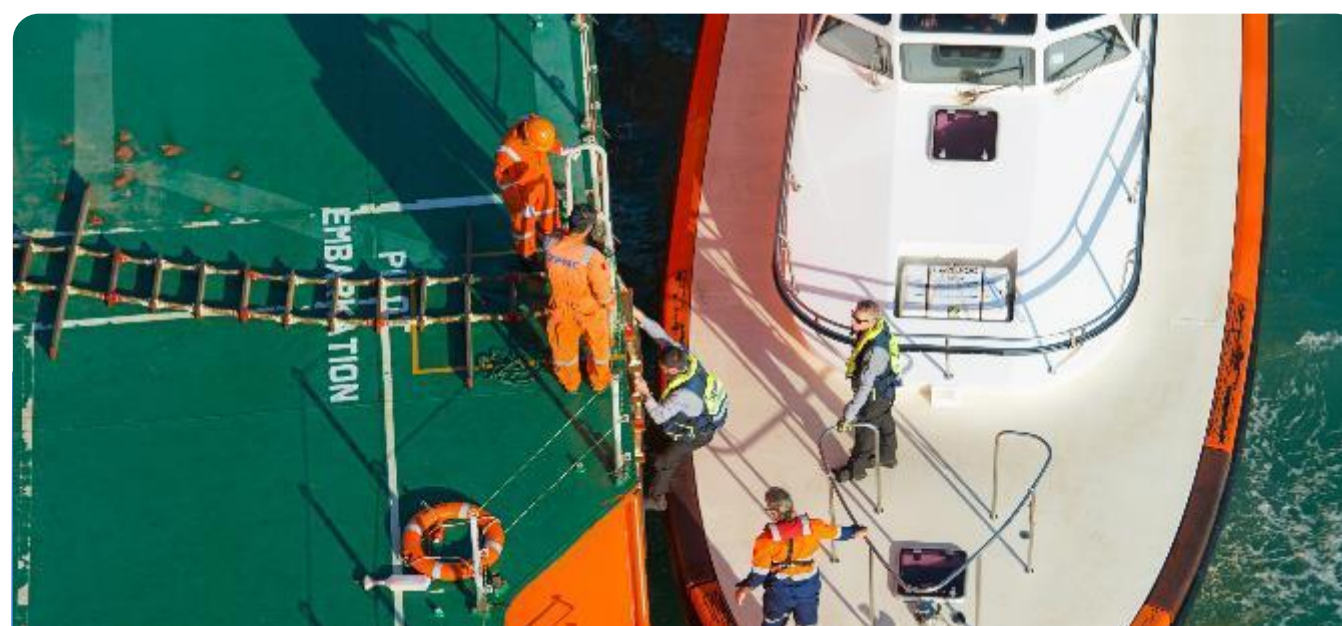
Disembarking crew to provide confirmation that they are free of any COVID-19 symptoms for the past 14 days. Vessel's master to provide official declaration such as Port of Call List and Medical Logbook to confirm crew is free of symptoms. Also, agents must coordinate a tele-appointment and provide the medical report to Port Health Authority.



Wilhelmsen Ships Agency will arrange transportation from vessel to airport in specifically designated vehicles



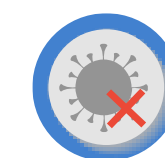
Precautionary measures to be taken for launch crew to avoid close contact with disembarking crew



Embarking Crew



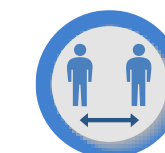
OPL is allowed, once all health regulation duly complied with



Onsigners must bring along their negative COVID-19 test results. Crew will only be allowed to enter Brazil by showing test results and should proceed directly to vessel upon arrival



Wilhelmsen Ships Agency will arrange transportation from airport to the vessel or hotel in specifically designated vehicles



Precautionary measures taken for launch crew to avoid close contact with embarking crew



Travel Arrangements for Crew Members



No VISAs are issued in Brazil. The seafarers must hold a valid seaman's book recognized by ILO Convention 185. OK-TO-BOARD issued by the Agent is required too.



Major international airlines are flying to São Paulo (IATA Code GRU) or to Rio de Janeiro (IATA Code GIG) in Brazil. From these airports, domestic flights to other airports are possible.

All seafarer land transportation needs to be carried out in specific vehicles that adhere to the following conditions:



Max transport capacity of 11 pax, to adhere to social distancing safety measures



The driver and all passengers must wear full PPE at all times.



The vehicle is only used to transport seafarers



Hotel Accommodation for Crew Members

Hotel stays are NOT recommended by Authorities. This is on a case by case, port by port basis.



On-signers: Preferably to board the vessel directly upon arrival in Brazil

Off-signers: Preferably to go straight to the airport for flight connections



Keep updated with the latest port restrictions on our COVID-19 Port Restrictions Map



Note: Recommended to view on desktop

<https://tinyurl.com/wilhelmsencovid19>

VISIT MAP

Contact Us

Wilhelmsen Ships Service do Brasil Ltd

Phone: +55 85 981 577 288

E-mail: wss.ftz.shipsagency@wilhelmsen.com

UPDATED
ON:
17 JULY
2020

Crew Change Requirements for Paraíba

PREREQUISITES

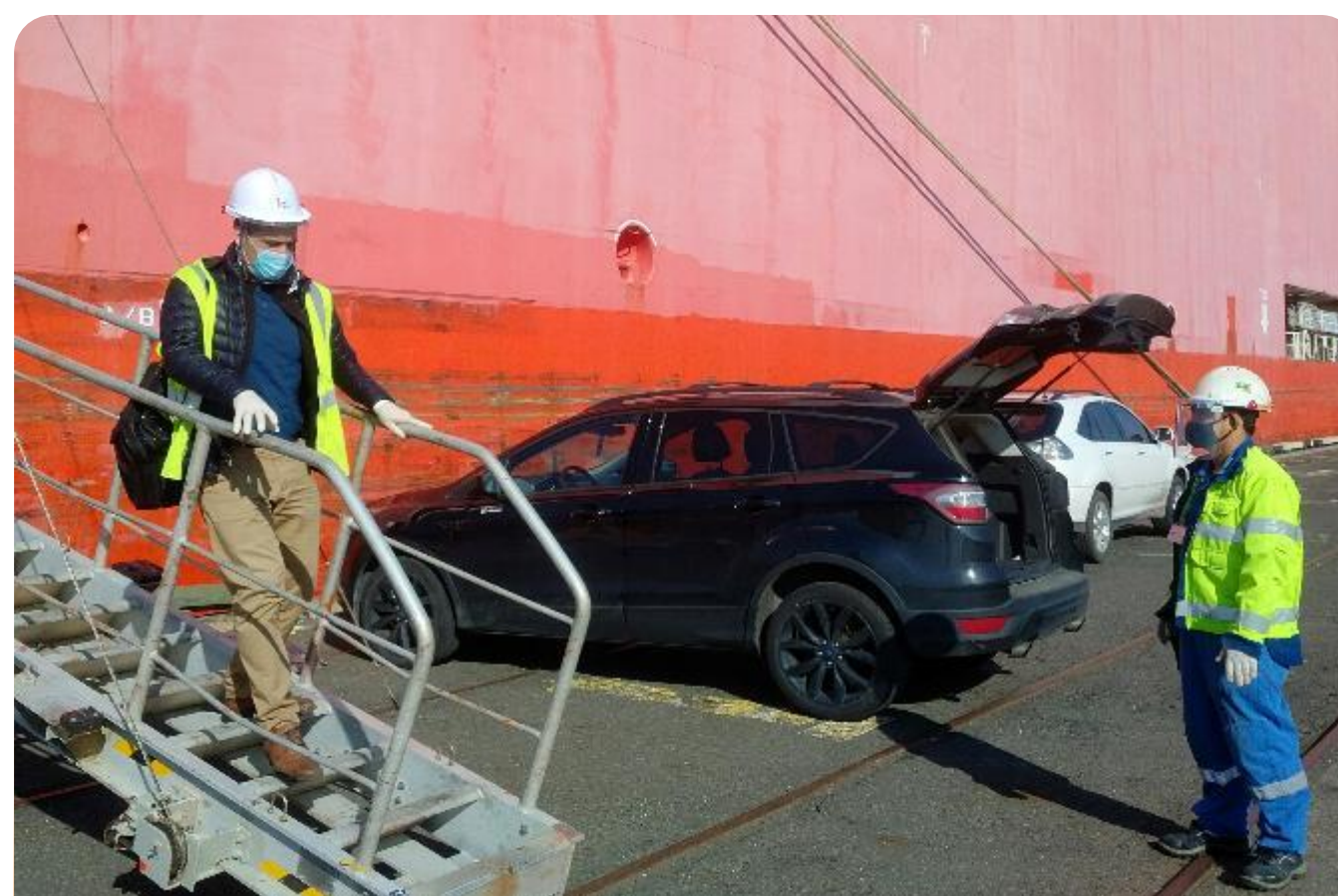
For those countries that do not have VISA exemption agreement with Brazil, it will be required that the Seaman's Book of the crewmember be issued by a Country signatory of ILO Conv 185



Brazil Now Open For Crew Change

With dynamic regulations surrounding crew change, it can be cumbersome trying to stay on top of all the latest changes and keeping track of all the documentation requirements.

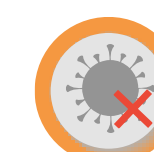
And that's what we are here for – we've got your backs.



Disembarkation



OPL is not allowed.



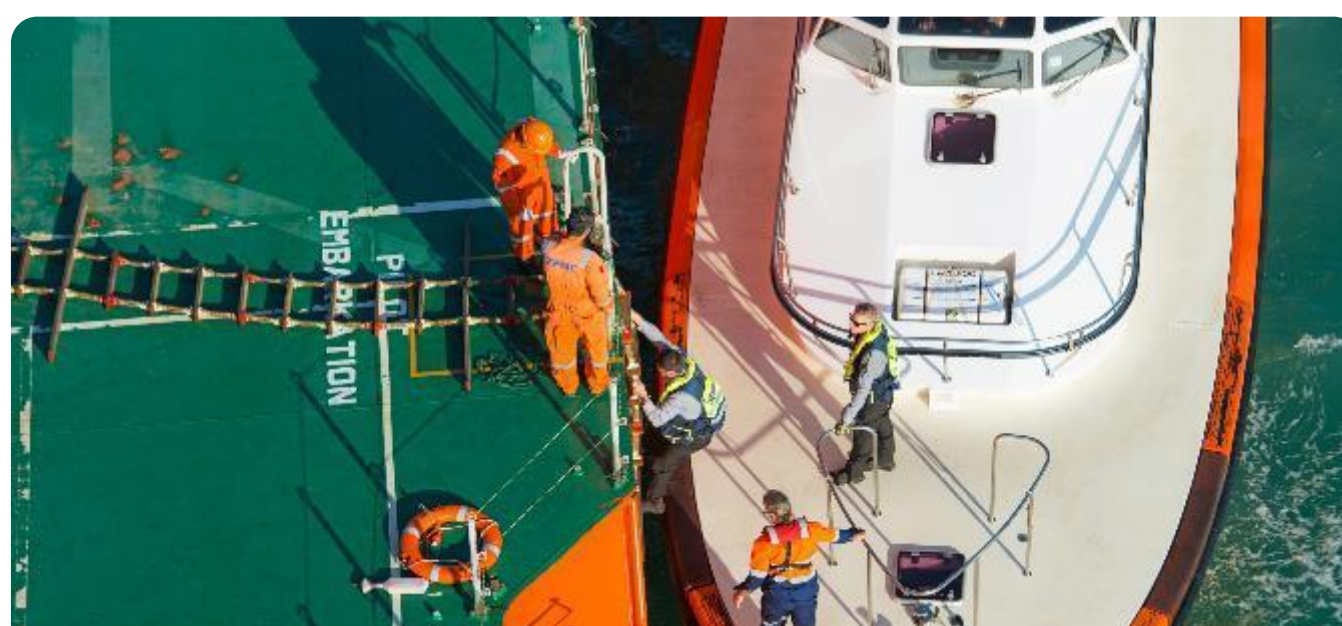
Disembarking crew are to provide confirmation that they are free of any COVID-19 symptoms for the past 14 days. Vessel's master to provide official declaration, medical examination and rapid test will be carried out on board.



Wilhelmsen Ships Agency will arrange for transportation from vessel to airport in specifically designated vehicles.



Hotel stays are not allowed by Authorities – it is preferable that the off-signer goes straight to the airport for flight connection.



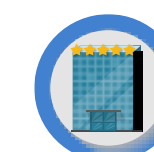
Embarking Crew



OPL is not allowed.



Wilhelmsen Ships Agency will arrange transportation from airport to hotel or vessel in specifically designated vehicles



Prior to embarkation, 14 days of quarantine is mandatory at the local hotel, and crew will then be issued a medical report by a doctor on the last day. All crew members will also need to be tested negative via a rapid test and forward it to local authorities for permission to embark.



Travel Arrangements for Crew Members



No VISAs are issued in Brazil. The seafarers must hold a valid seaman's book recognized by ILO Convention. OK-TO-BOARD issued by the Agent and the Crew Employment Contract are required before on-signer arrival at São Paulo (GRU).



Main international airlines are flying to São Paulo (GRU) or to Rio de Janeiro (GIG) in Brazil. From these airports, a domestic leg to Presidente Castro Pinto (JPA) airport is possible.

All seafarer land transportation needs to be carried out in specific vehicles that adhere to the following conditions:



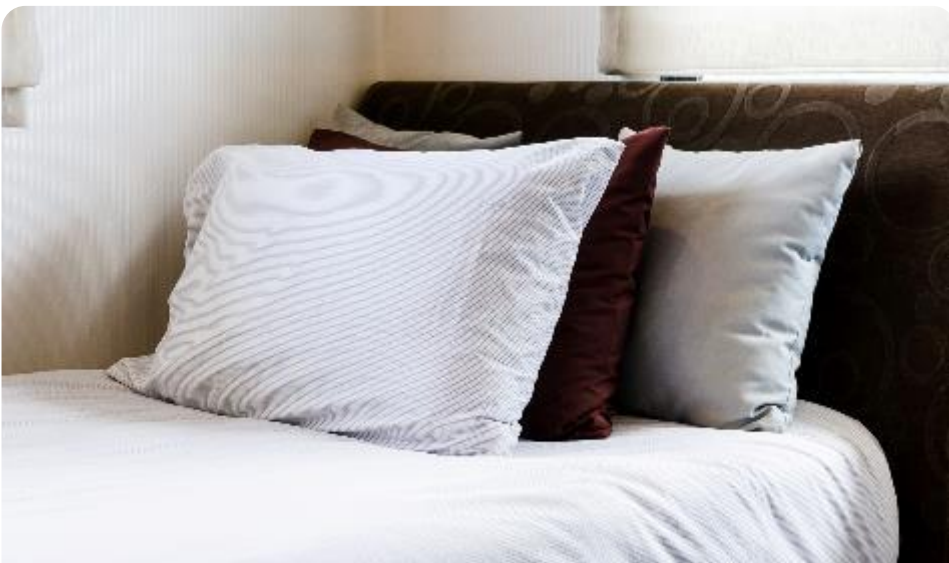
Max transport capacity of 10 pax, to adhere to social distancing safety measures



The driver and all passengers must wear full PPE at all times.



The vehicle is only used to transport seafarers



Hotel Accommodation for Crew Members



On-signers: Allowed only for 14 days of quarantine which is mandatory, and crew are not allowed to leave the hotel until embarkation

Off-signers: Hotel stays are not allowed



Keep updated with the
latest port restrictions
on our COVID-19
Port Restrictions Map



Note: Recommended
to view on desktop

<https://tinyurl.com/wilhelmsencovid19>

VISIT MAP

Contact Us

Wilhelmsen Ships Service do Brasil Ltda

Phone: +55 21 996 402 451

E-mail: wss-rio-shipsagency@wilhelmsen.com

**UPDATED
ON:
17 JULY
2020**

Crew Change Requirements for Paranagua

PREREQUISITES

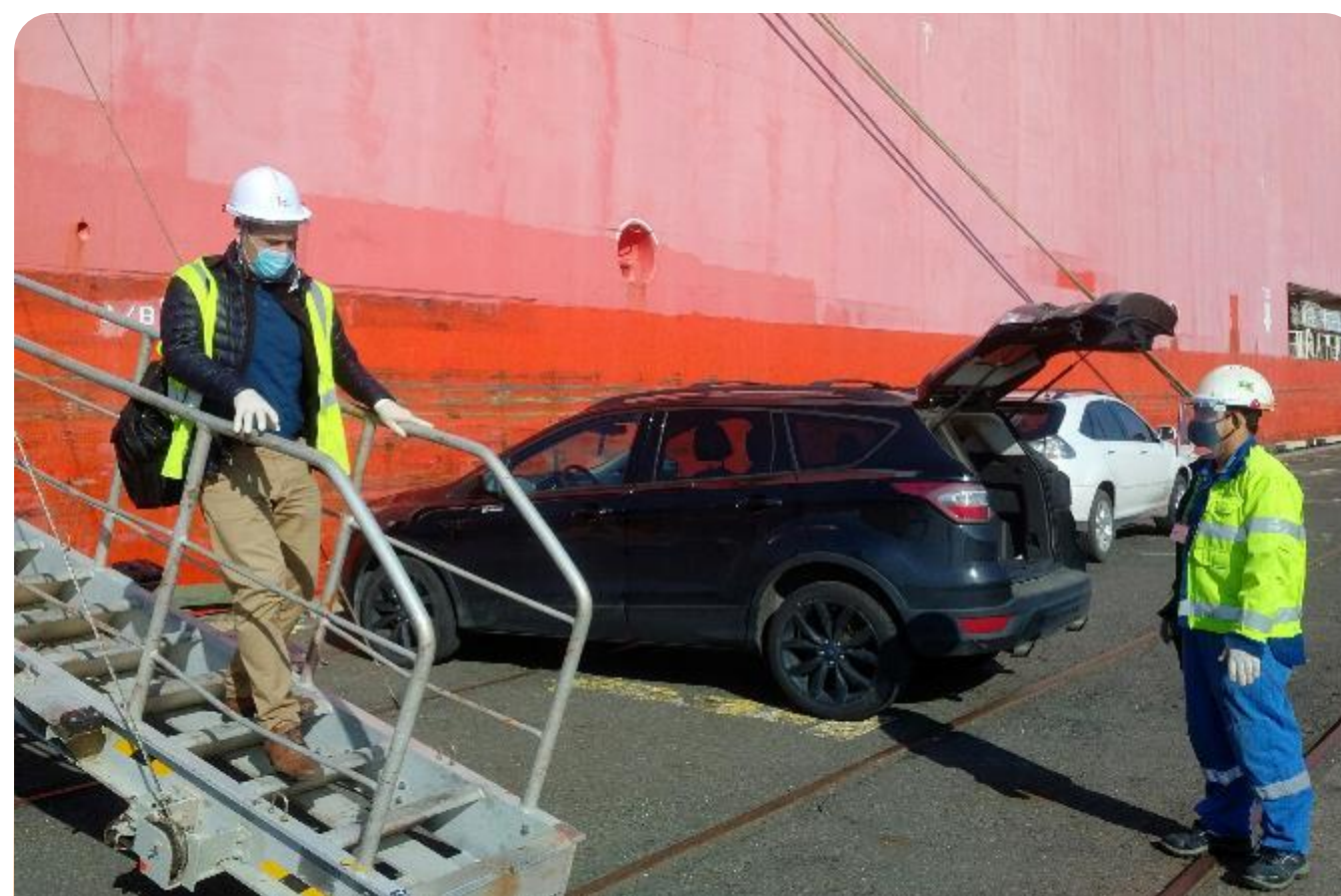
Crew Change only will be allowed for Crew Members from ILO 185 signatory countries. For crew members from ILO 108 countries, permission should be granted from a local Brazilian Consulate before embarking. Currently, there are no restrictions on type of vessel.



Brazil Now Open For Crew Change

With dynamic regulations surrounding crew change, it can be cumbersome trying to stay on top of all the latest changes and keeping track of all the documentation requirements.

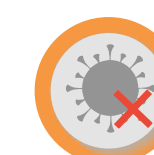
And that's what we are here for – we've got your backs.



Disembarkation



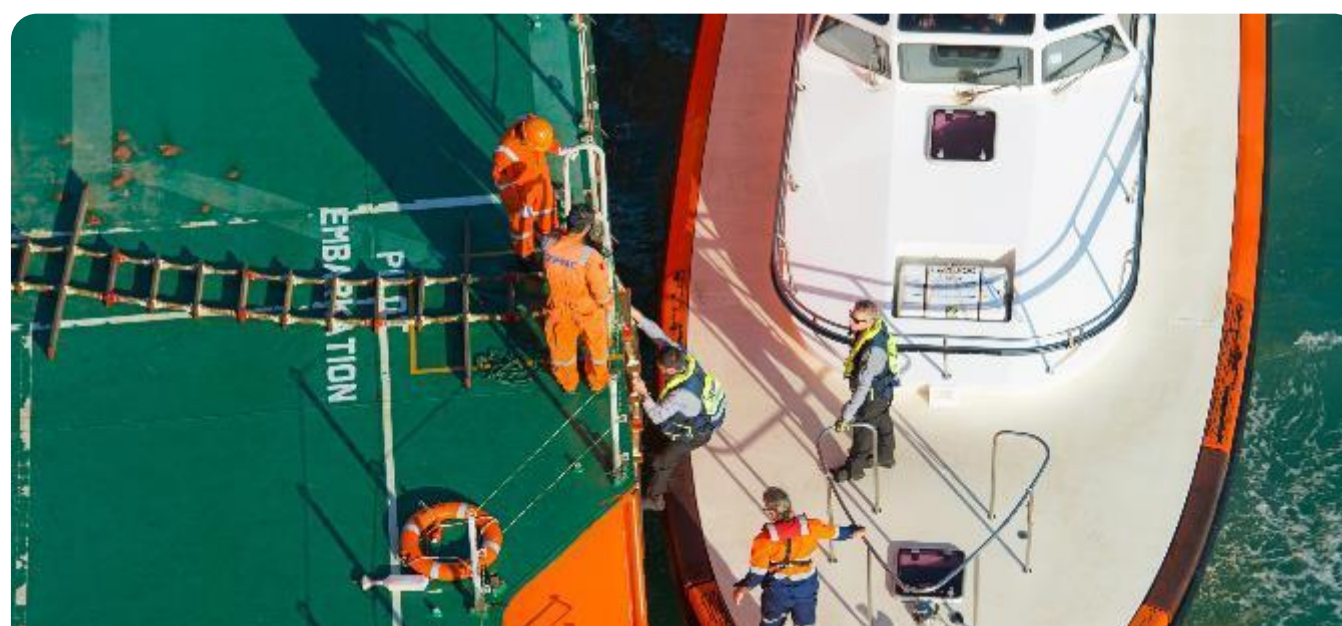
OPL is not allowed, except for medical disembarkation.



Disembarking crew to provide confirmation that they are free of any COVID-19 symptoms for the past 14 days. Vessel's master to provide official declaration such as Port of Call List and Medical Logbook to confirm crew is free of symptoms.



Wilhelmsen Ships Agency will arrange transportation from vessel to airport in specifically designated vehicles



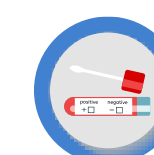
Embarking Crew



OPL is not allowed



Wilhelmsen Ships Agency will arrange transportation from airport to the vessel or hotel and will need to be carried out in specifically designated vehicles



Embarking crew must bring along their negative COVID-19 test results. Crew will only be allowed to enter Brazil by showing test results and should proceed directly to vessel upon arrival



Travel Arrangements for Crew Members



No VISAs are issued in Brazil. The seafarers must hold a valid seaman's book recognized by ILO Convention. OK-TO-BOARD issued by the Agent is required too.



Major international airlines are flying to São Paulo (IATA Code GRU) or to Rio de Janeiro (IATA Code GIG) in Brazil. From these airports, domestic flights to other airports are possible.

All seafarer land transportation needs to be carried out in specific vehicles that adhere to the following conditions:



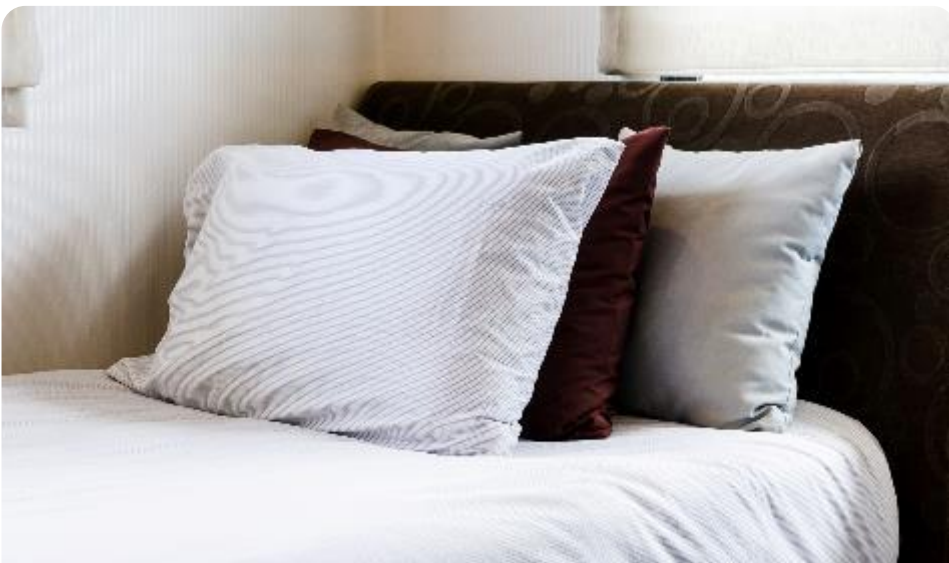
Max transport capacity of 11 pax, to adhere to social distancing safety measures



The driver and all passengers must wear full PPE at all times



The vehicle is only used to transport seafarers



Hotel Accommodation for Crew Members

Hotel stays are NOT recommended by Authorities. This is on a case by case, port by port basis.



On-signers: Preferably to board the vessel directly upon arrival in Brazil

Off-signers: Preferably to go straight to the airport for flight connections



Keep updated with the latest port restrictions on our COVID-19 Port Restrictions Map



Note: Recommended to view on desktop

<https://tinyurl.com/wilhelmsencovid19>

VISIT MAP

Contact Us

Wilhelmsen Ships Service do Brasil Ltda

Phone: +55 21 996 402 451

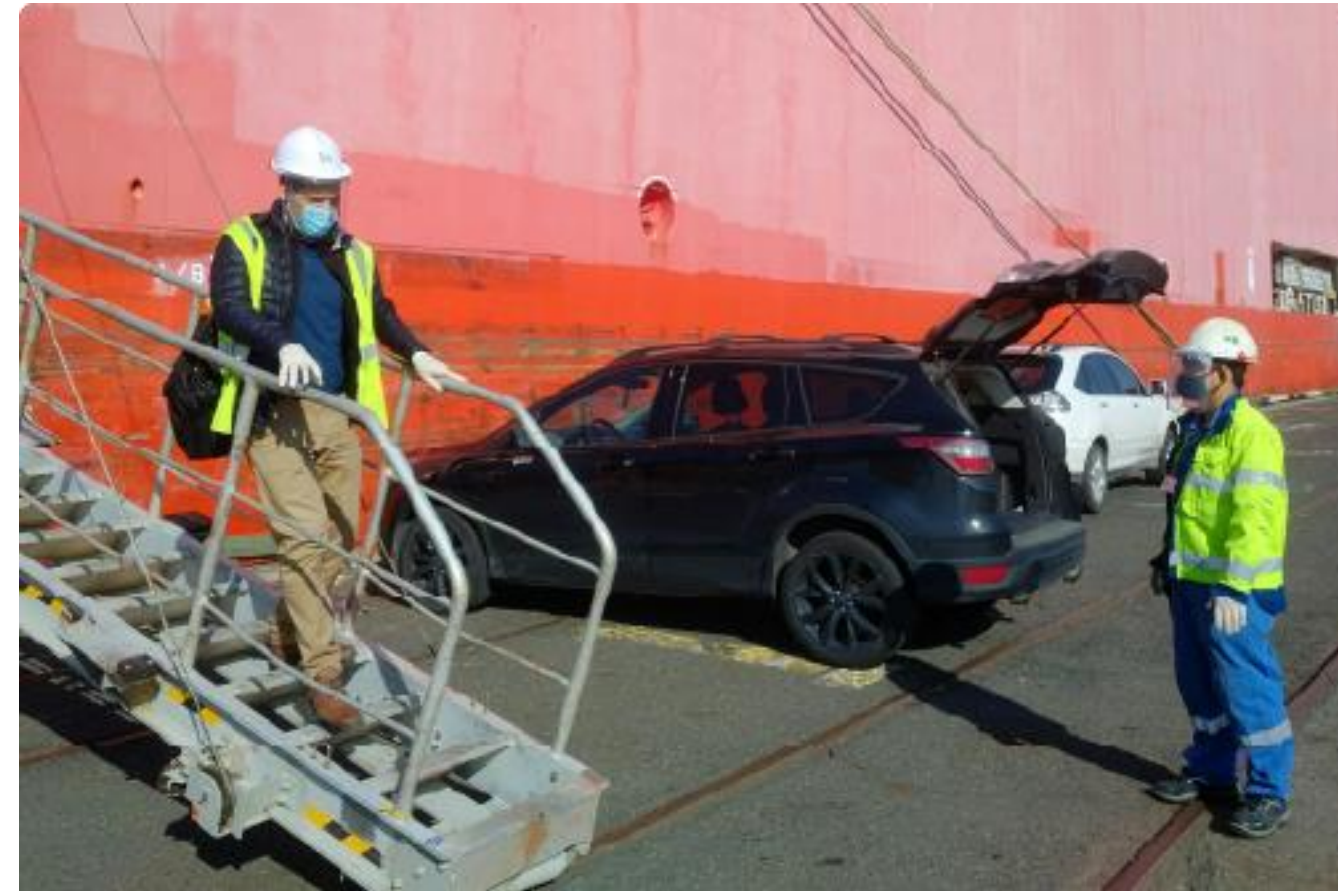
E-mail: wss-rio-shipsagency@wilhelmsen.com

UPDATED
ON:
8 JULY
2020

Crew Change Requirements for Rio de Janeiro

PREREQUISITES

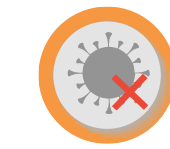
Crew Change is allowed for crew members from ILO 185 signatory countries. For crew members from ILO 108 countries, permission is required from the local Brazilian Consulate before embarkation.



Disembarkation: Off-signers



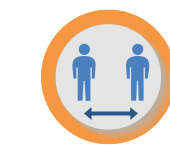
OPL is not allowed (Except for medical disembarkation)



Disembarking crew to provide confirmation that they are free of any COVID-19 symptoms for the past 14 days. Vessel's master to provide official declaration as Port of Call List and Medical Logbook, confirming crew is free of symptoms



Wilhelmsen Ships Agency will arrange special transportation from Vessel to airport in specifically designated vehicles



Precautionary measures are taken for launch crew to avoid close contact with disembarking crew

Brazil Now Open For Crew Change

With dynamic regulations surrounding crew change, it can be cumbersome trying to stay on top of all the latest changes and keeping track of all the documentation requirements.

And that's what we are here for – we've got your backs.



Embarking Crew: On-signers



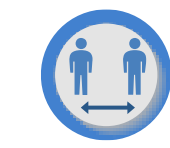
OPL is not allowed



On-signers must bring their COVID-19 test showing negative results. Crew will only be allowed to enter Brazil by showing test results and should proceed directly to board vessel upon arrival



Wilhelmsen Ships Agency will arrange special transportation from Airport to the Vessel and will need to be carried out in specifically designated vehicles



Precautionary measures taken for launch crew to avoid close contact with embarking crew



Travel Arrangements for Crew Members



No VISAs are issued in Brazil. The seafarers must hold a valid seaman's book recognized by ILO Convention. In addition, OK-TO-BOARD issued by the Agent is required.



Major international airlines are flying to São Paulo (IATA Code GRU) or to Rio de Janeiro (IATA Code GIG) in Brazil. From these airports, domestic flights to other airports are possible.

All seafarer land transportation needs to be carried out in specific vehicles that adhere to the following conditions:



Max transport capacity of 11 pax, to adhere to social distancing safety measures



The driver and all passengers must wear full PPE at all times



The vehicle is only used to transport seafarers



Hotel Accommodation for Crew Members

Hotel stays are NOT recommended by Authorities. This is on a case by case, port by port basis.



On-signers: Preferably to board the vessel directly upon arrival in Brazil



Off-signers: Preferably to go straight to the airport for flight connections



Keep updated with the latest port restrictions on our COVID-19 Port Restrictions Map



Note: Recommended to view on desktop

<https://tinyurl.com/wilhelmsencovid19>

VISIT MAP

Contact Us

Wilhelmsen Ships Service do Brasil Ltda

Phone: +55 21 996 402 451

E-mail: wss-rio-shipsagency@wilhelmsen.com

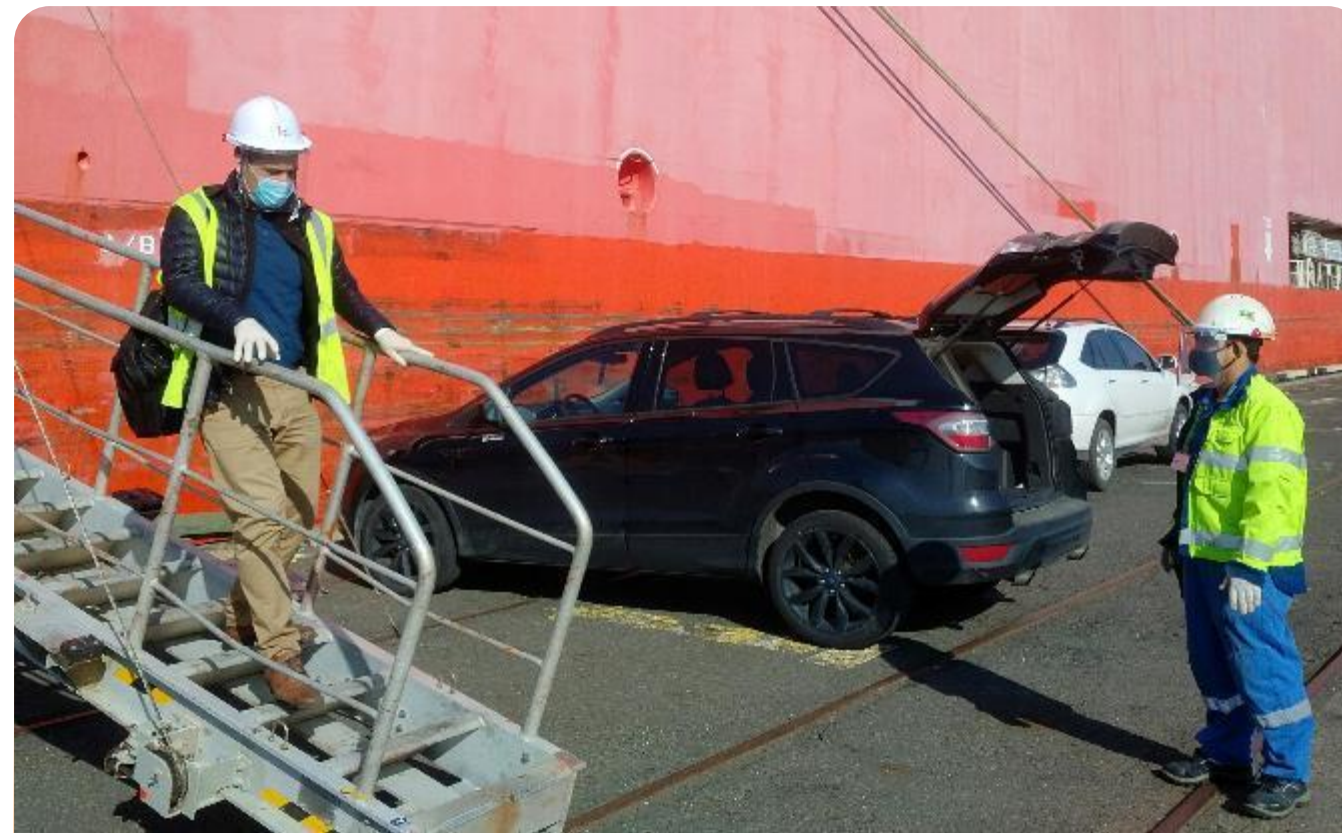
UPDATED
ON:
17 JULY
2020

Crew Change Requirements for Rio Grande do Norte

Ships Agency

PREREQUISITES

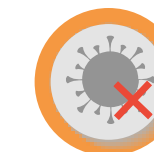
For countries that do not have VISA exemption agreement with Brazil, seafarers must hold a valid seaman's book recognized by ILO Convention 185



Disembarkation



OPL is not allowed



Disembarking crew are to provide confirmation that they are free of any COVID-19 symptoms for the past 14 days. Vessel's master need to provide official declaration, medical examination and rapid test will be carried out.

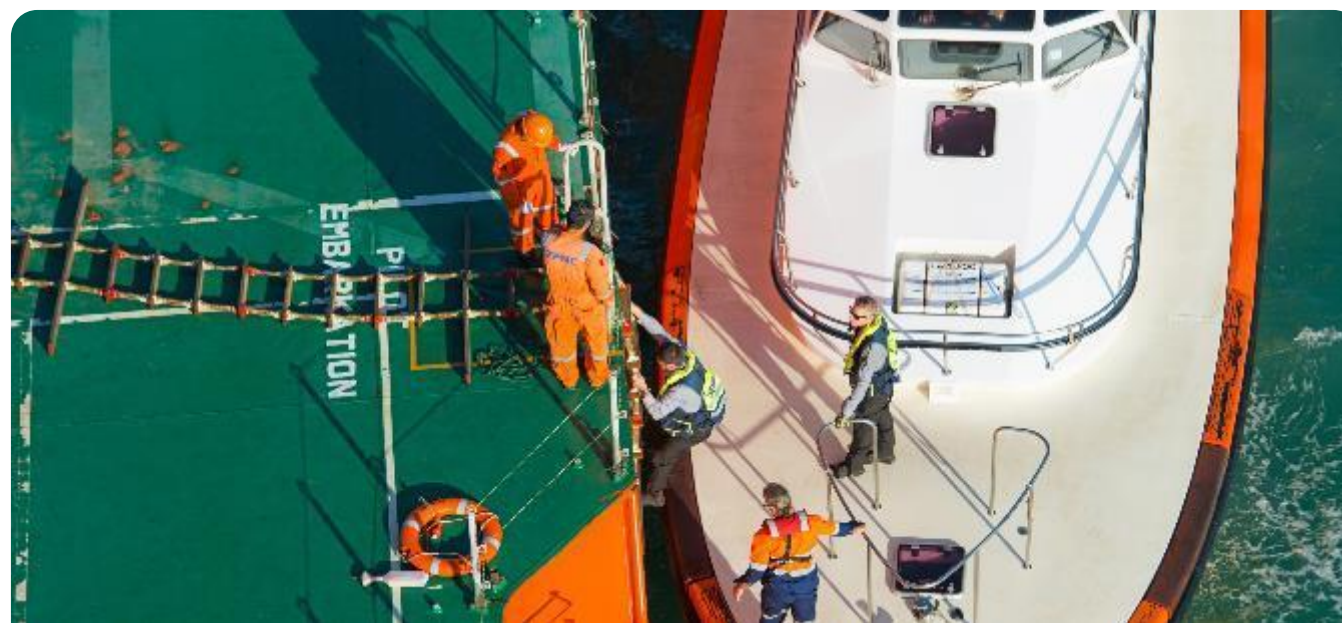


Wilhelmsen Ships Agency will arrange for transportation from vessel to airport in specifically designated vehicles

Brazil Now Open For Crew Change

With dynamic regulations surrounding crew change, it can be cumbersome trying to stay on top of all the latest changes and keeping track of all the documentation requirements.

And that's what we are here for – we've got your backs.



Embarking Crew



OPL is not allowed



Prior to embarkation, 14 days of quarantine is mandatory at the local hotel, and crew will then be issued a medical report by a doctor on the last day. All crew members will also need to be tested negative via a rapid test and forward it to local authorities for permission to embark.



Wilhelmsen Ships Agency will arrange for transportation from airport to hotel or vessel in specifically designated vehicles



Travel Arrangements for Crew Members



No VISAs are issued in Brazil. The seafarers must hold a valid seaman's book recognized by ILO Convention. OK-TO-BOARD issued by the Agent and the Crew Employment Contract are required before on-signer arrival at São Paulo (GRU).



Main international airlines are flying to São Paulo (GRU) or to Rio de Janeiro (GIG) in Brazil. From these airports, a domestic leg to Natal (NAT) airport is possible.

All seafarer land transportation needs to be carried out in specific vehicles that adhere to the following conditions:



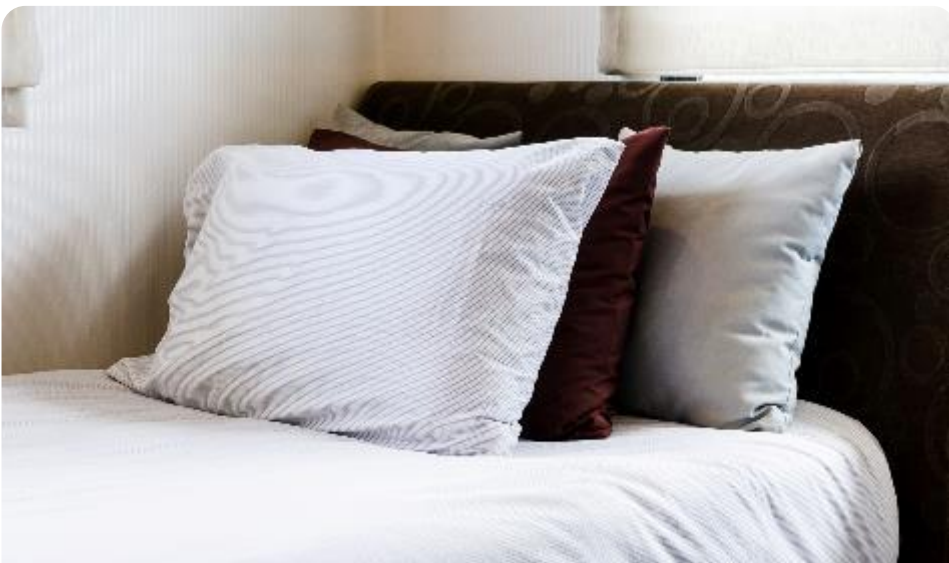
Max transport capacity of 10 pax, to adhere to social distancing safety measures



The driver and all passengers must wear full PPE at all times



The vehicle is only used to transport seafarers



Hotel Accommodation for Crew Members



On-signers: Hotel stay is allowed only for the quarantine and the crew cannot leave the hotel until embarkation.

Off-signers: Hotel stays are allowed



Keep updated with the
latest port restrictions
on our COVID-19
Port Restrictions Map



Note: Recommended
to view on desktop

<https://tinyurl.com/wilhelmsencovid19>

VISIT MAP

Contact Us

Wilhelmsen Ships Service do Brasil Ltda
Phone: +55 21 996 402 451
E-mail: wss-rio-shipsagency@wilhelmsen.com

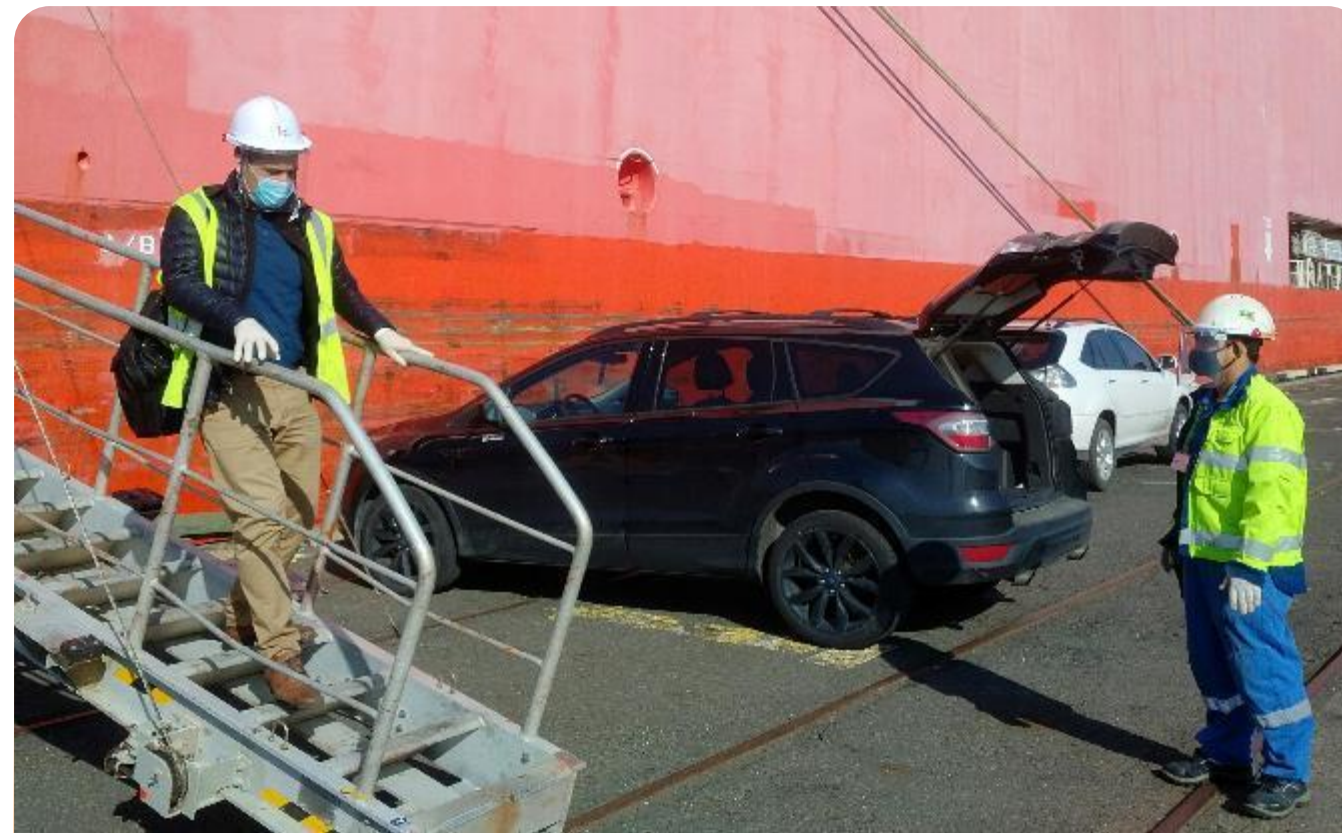
UPDATED
ON:
17 JULY
2020

Crew Change Requirements for Rio Grande do Sul

Ships Agency

PREREQUISITES

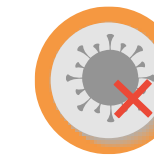
For countries that do not have VISA exemption agreement with Brazil, seafarers must hold a valid seaman's book recognized by ILO Convention 185



Disembarkation



OPL is not allowed



Disembarking crew are to provide confirmation that they are free of any COVID-19 symptoms for the past 14 days. Vessel's master to provide official declaration, and Rapid Test should be carried out.



Wilhelmsen Ships Agency will arrange for transportation from vessel to airport in specifically designated vehicles

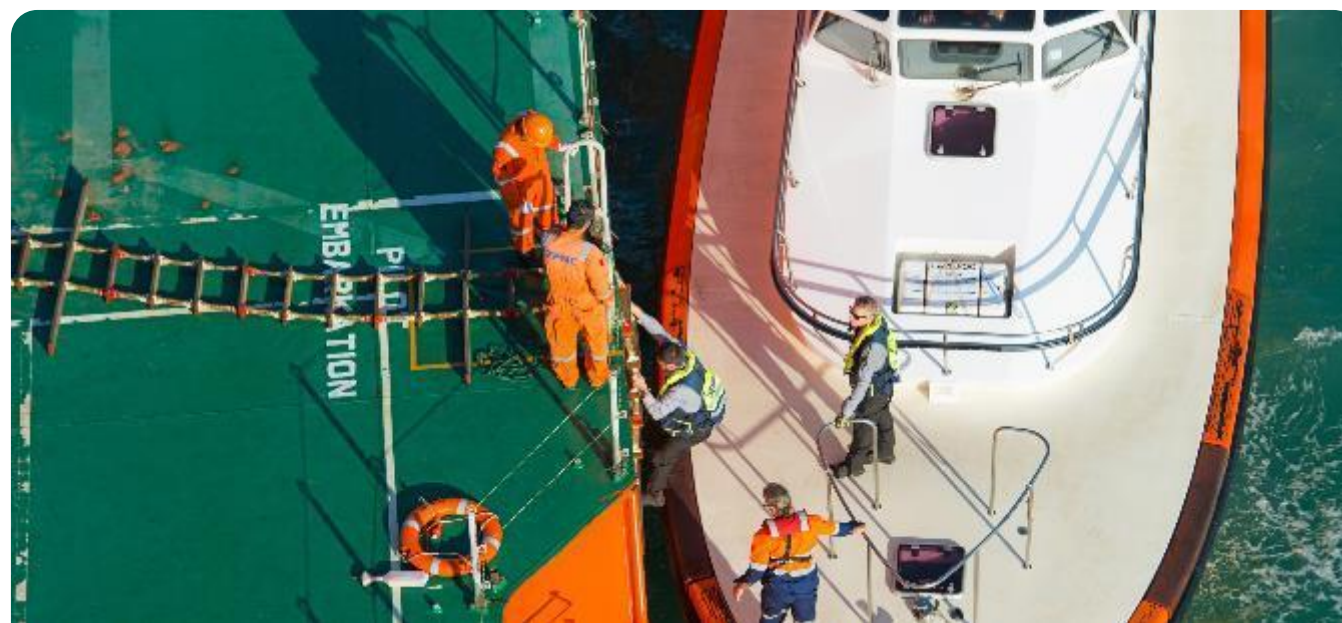


Hotel stays are not allowed for off-signers. Local authorities request that all crew members go straight to the airport after disembarking.

Brazil Now Open For Crew Change

With dynamic regulations surrounding crew change, it can be cumbersome trying to stay on top of all the latest changes and keeping track of all the documentation requirements.

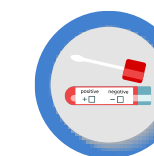
And that's what we are here for – we've got your backs.



Embarking Crew



OPL is not allowed



Prior to embarkation, crew will need to be evaluated by a Doctor and tested for COVID-19 (PCR TEST). Upon receiving negative results, proceed directly to the vessel, or if necessary, hotels, and remain in quarantine until embarkation (with daily monitoring, blood tests and medical expenses).



If hotel stay is necessary, check availability in advance, as hotels are working within restrictions.



Wilhelmsen Ships Agency will arrange for transportation from airport to hotel or vessel in specifically designated vehicles



Travel Arrangements for Crew Members



No VISAs are issued in Brazil. The seafarers must hold a valid seaman's book recognized by ILO Convention. OK-TO-BOARD issued by the Agent and the Crew Employment Contract are required before on-signer arrival at São Paulo (GRU).



Main international airlines are flying to São Paulo (GRU) or to Rio de Janeiro (GIG) in Brazil. From these airports, a domestic leg to Porto Alegre (POA) airport is possible.

All seafarer land transportation needs to be carried out in specific vehicles that adhere to the following conditions:



Max transport capacity of 10 pax, to adhere to social distancing safety measures



The driver and all passengers must wear full PPE at all times



The vehicle is only used to transport seafarers



Hotel Accommodation for Crew Members

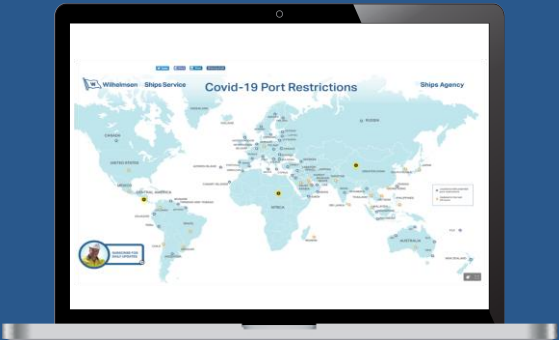


On-signers: Hotel stays not recommended by the authorities. Preferably to go straight to vessel for embarkation.

Off-signers: Hotel stays not allowed



Keep updated with the latest port restrictions on our COVID-19 Port Restrictions Map



Note: Recommended to view on desktop

<https://tinyurl.com/wilhelmsencovid19>

VISIT MAP

Contact Us

Wilhelmsen Ships Service do Brasil Ltda
Phone: +55 21 996 402 451
E-mail: wss-rio-shipsagency@wilhelmsen.com

Crew Change Requirements for Santa Catarina

PREREQUISITES

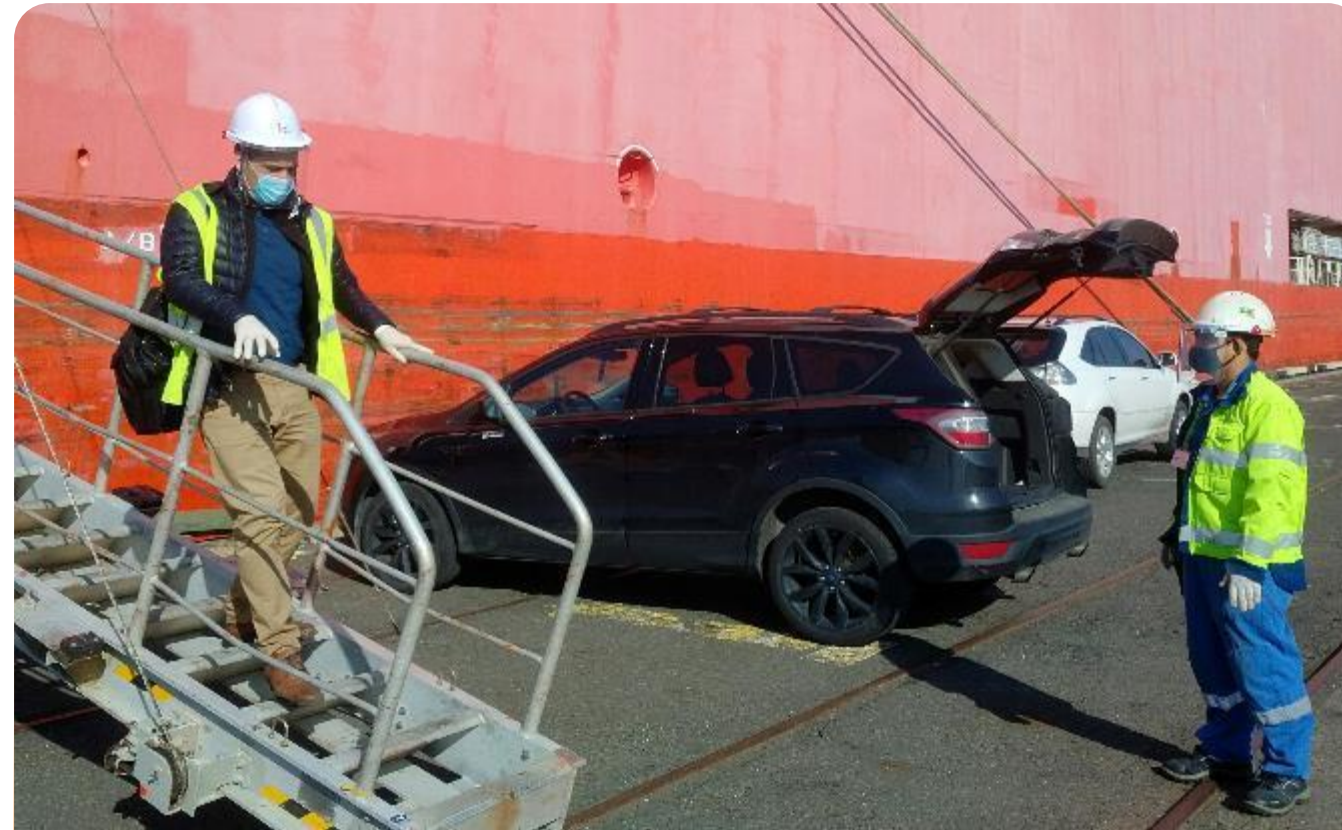
For countries that do not have VISA exemption agreement with Brazil, seafarers must hold a valid seaman's book recognized by ILO Convention 185



Brazil Now Open For Crew Change

With dynamic regulations surrounding crew change, it can be cumbersome trying to stay on top of all the latest changes and keeping track of all the documentation requirements.

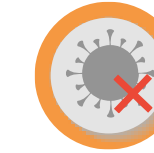
And that's what we are here for – we've got your backs.



Disembarkation



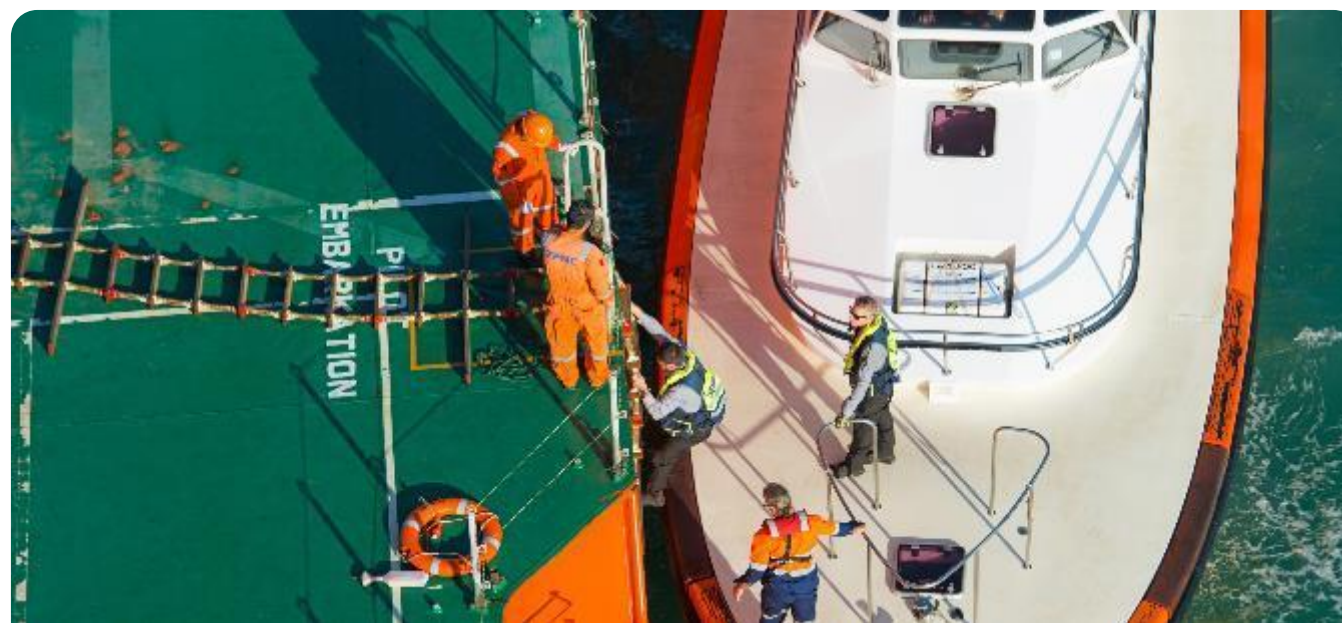
OPL is not allowed



Disembarking crew are to provide confirmation that they are free of any COVID-19 symptoms for the past 14 days. vessel's master to provide official declaration, and rapid test should be carried out.



Wilhelmsen Ships Agency will arrange for transportation from vessel to airport in specifically designated vehicles



Embarking Crew



OPL is not allowed



Prior to embarkation, 14 days of quarantine is mandatory at the local hotel, and crew will then be issued a medical report by a doctor on the last day. All crew members will also need to be tested negative via a rapid test and the negative test result to be forwarded to local authorities for permission to embark.



Wilhelmsen Ships Agency will arrange for transportation from airport to hotel or vessel in specifically designated vehicles



Travel Arrangements for Crew Members



No VISAs are issued in Brazil. The seafarers must hold a valid seaman's book recognized by ILO Convention. OK-TO-BOARD issued by the Agent and the Crew Employment Contract are required before on-signer arrival at São Paulo (GRU).

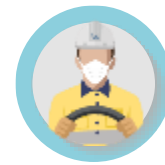


Main international airlines are flying to São Paulo (GRU) or to Rio de Janeiro (GIG) in Brazil. From these airports, a domestic leg to Florianópolis (FLN) airport is possible.

All seafarer land transportation needs to be carried out in specific vehicles that adhere to the following conditions:



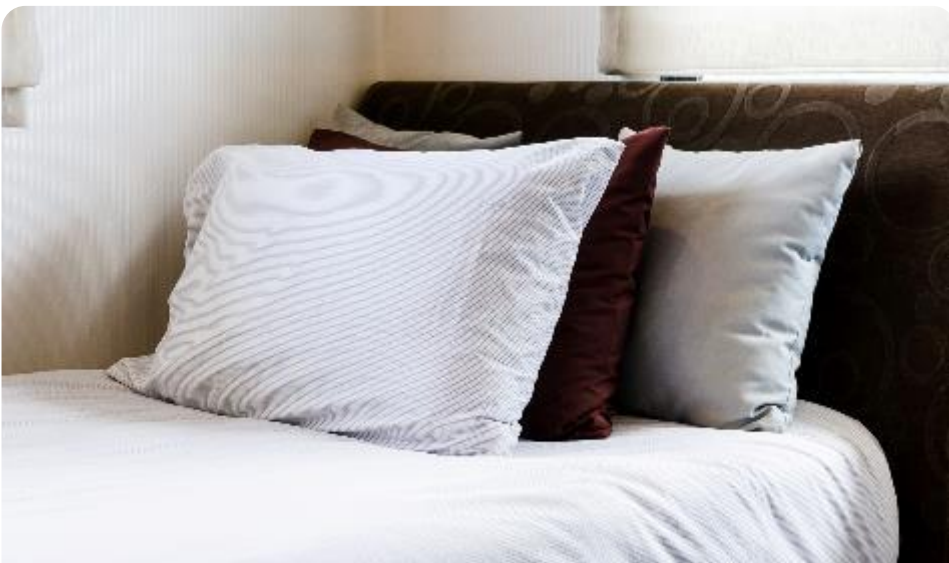
Max transport capacity of 10 pax, to adhere to social distancing safety measures



The driver and all passengers must wear full PPE at all times



The vehicle is only used to transport seafarers



Hotel Accommodation for Crew Members



On-signers: Allowed only for the mandatory 14 days of quarantine and the crew cannot leave the hotel until the embarkation.

Off-signers: Hotel stays not allowed



Keep updated with the latest port restrictions on our COVID-19 Port Restrictions Map



Note: Recommended to view on desktop

<https://tinyurl.com/wilhelmsencovid19>

VISIT MAP

Contact Us

Wilhelmsen Ships Service do Brasil Ltda
Phone: +55 21 996 402 451
E-mail: wss-rio-shipsagency@wilhelmsen.com

UPDATED
ON:
22 JULY
2020

Crew Change Requirements for Santos

PREREQUISITES

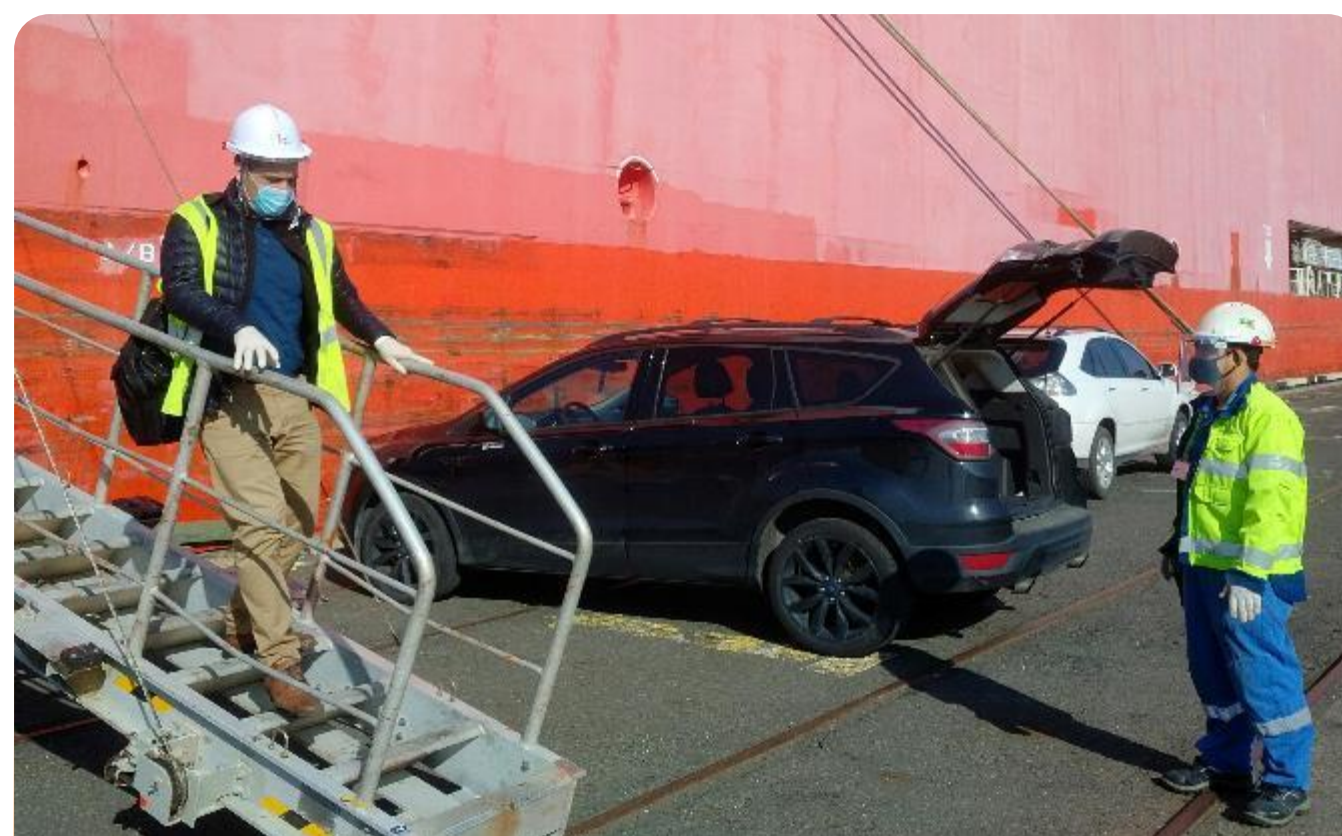
For those countries that do not have VISA exemption agreement with Brazil, it will be required that the Seaman's Book of the crewmember be issued by a Country signatory of ILO Conv 185



Brazil Now Open For Crew Change

With dynamic regulations surrounding crew change, it can be cumbersome trying to stay on top of all the latest changes and keeping track of all the documentation requirements.

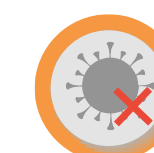
And that's what we are here for – we've got your backs.



Disembarkation



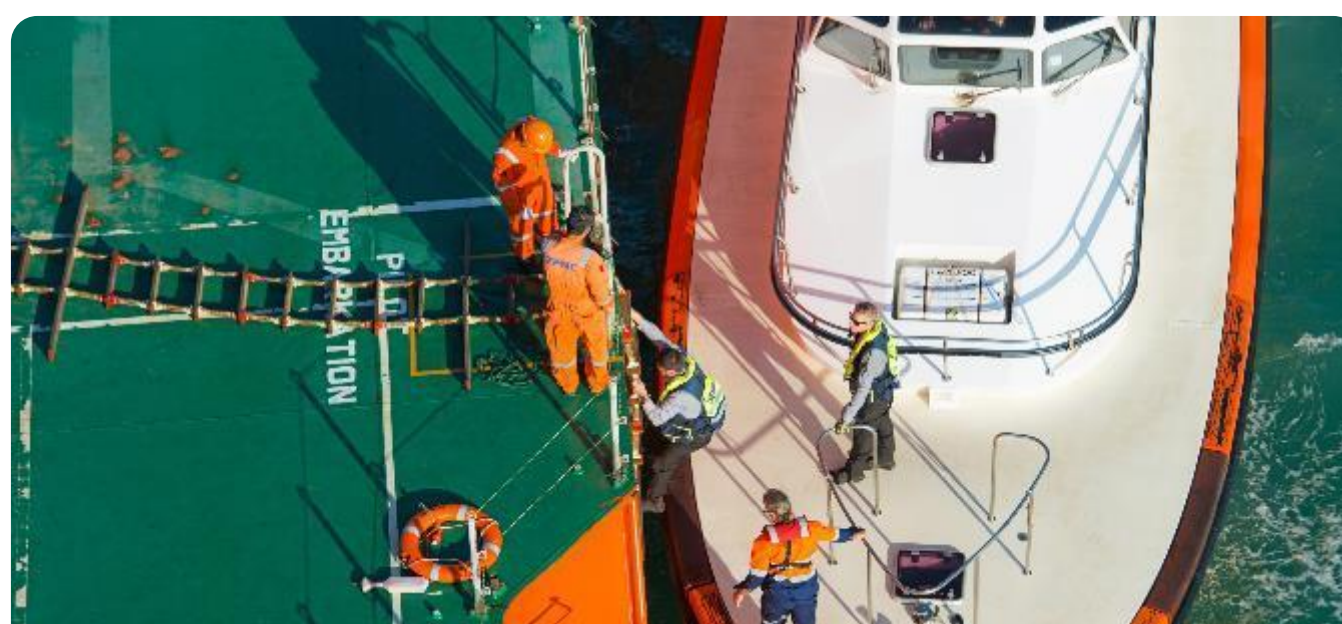
OPL is not allowed



Disembarking crew are to provide confirmation that they are free of any COVID-19 symptoms for the past 14 days. Medical consultation and rapid test must be performed before the disembarkation and e-ticket issued for authorization must be present.



Maximum 2 days of hotel stay is allowed for off-signers. Hotel stays are not recommended by Authorities - it is preferable that the off-signer goes straight to the airport for flight connection.



Embarking Crew



OPL is not allowed



Prior to embarkation, 14 days of quarantine is mandatory at home country and crew to check their temperature twice a day.



Upon arrival in Brazil, crew will be sent to a local doctor for health screening and to undergo COVID-19 rapid test. The agent must submit all required information to the local Authorities for embarkation after which.



Maximum 2 days of hotel stay is allowed for on-signers while waiting for the vessel to berth.



Travel Arrangements for Crew Members



No VISAs are issued in Brazil. The seafarers must hold a valid seaman's book recognized by ILO Convention. OK-TO-BOARD issued by the Agent and the Crew Employment Contract are required before on-signer arrival at São Paulo (GRU).

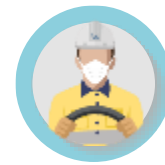


Main international airlines are flying to São Paulo (GRU) or to Rio de Janeiro (GIG) in Brazil. For Santos port, only GRU is possible.

All seafarer land transportation needs to be carried out in specific vehicles that adhere to the following conditions:



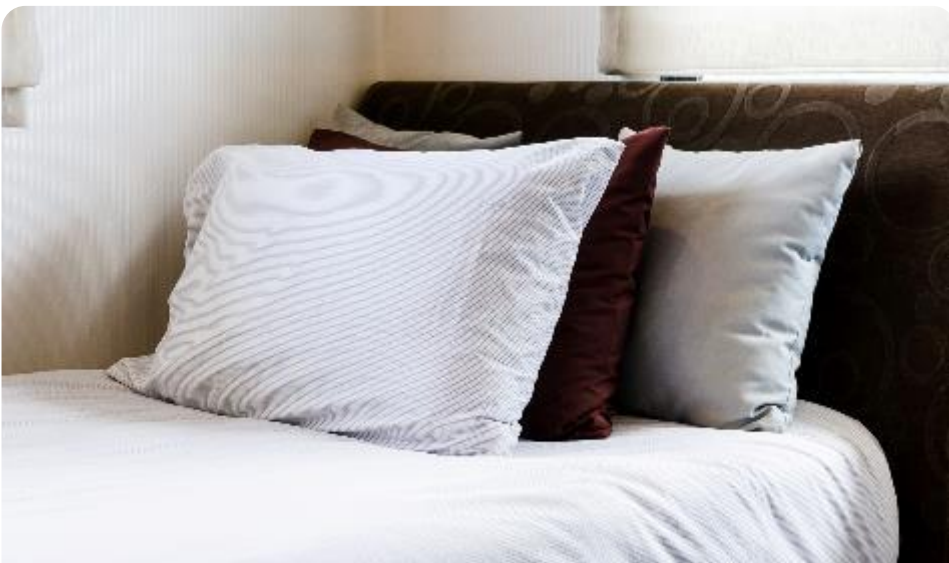
Max transport capacity of 10 pax, to adhere to social distancing safety measures



The driver and all passengers must wear full PPE at all times.



The vehicle is only used to transport seafarers



Hotel Accommodation for Crew Members



Hotel stays are allowed for both on-signers and off-signers.



Keep updated with the latest port restrictions on our COVID-19 Port Restrictions Map



Note: Recommended to view on desktop

<https://tinyurl.com/wilhelmsencovid19>

VISIT MAP

Contact Us

Wilhelmsen Ships Service do Brasil Ltda

Phone: +55 21 996 402 451

E-mail: wss-rio-shipsagency@wilhelmsen.com

UPDATED
ON:
17 JULY
2020

Crew Change Requirements for São Luís

PREREQUISITES

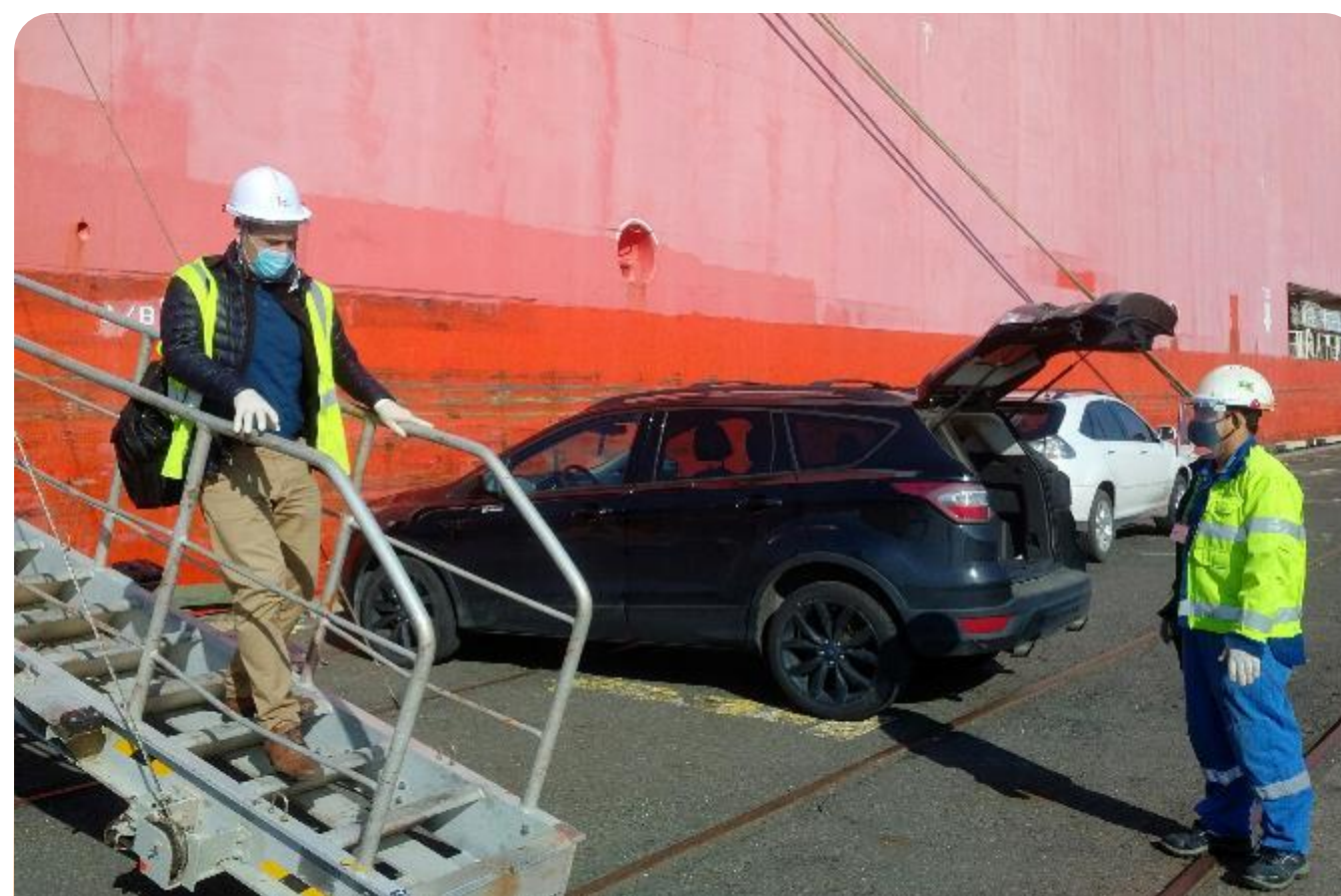
Currently, there are no restrictions on types of vessels allowed. Application is required for crew disembarking.



Brazil Now Open For Crew Change

With dynamic regulations surrounding crew change, it can be cumbersome trying to stay on top of all the latest changes and keeping track of all the documentation requirements.

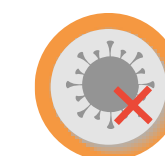
And that's what we are here for – we've got your backs.



Disembarkation



OPL is allowed



Disembarking crew are to provide confirmation that they are free of any COVID-19 symptoms for the past 14 days. Vessel's master to provide official declaration, and Rapid Test should be carried out.



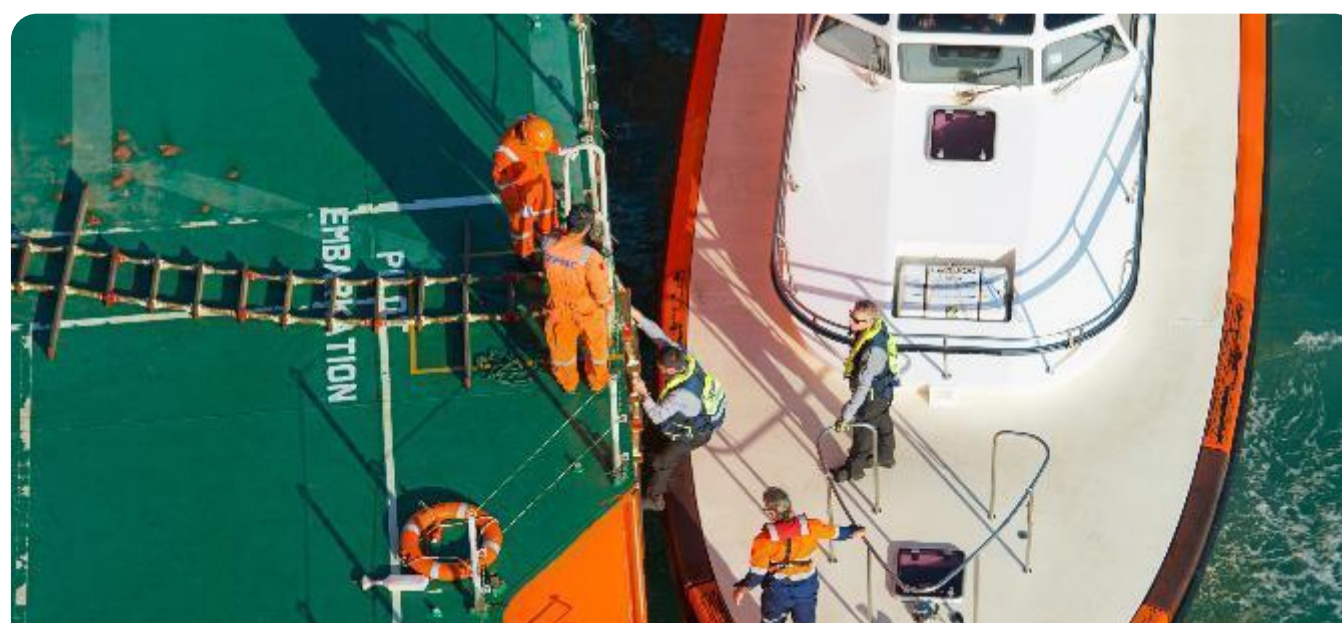
Wilhelmsen Ships Agency will arrange for transportation from vessel to airport in specifically designated vehicles.



Hotel stays are not recommended by Authorities - it is preferable that the off-signer goes straight to the airport for flight connection. This will vary on a case by case, port to port basis.



Precautionary measures are taken for launch crew to avoid close contact with disembarking crew.



Embarking Crew



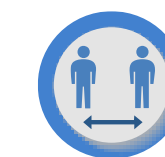
OPL is allowed



Wilhelmsen Ships Agency will arrange transportation from airport to the hotel or vessel in specifically designated vehicles



Only designated hotels allowed and 14 days of quarantine is mandatory. However, if rapid test is conducted and results are negative, quarantine period can be reduced to 7 days.



Precautionary measures are taken for launch crew to avoid close contact with embarking crew.



Travel Arrangements for Crew Members



No VISAs are issued in Brazil. The seafarers must hold a valid seaman's book recognized by ILO Convention. OK-TO-BOARD issued by the Agent is required too.

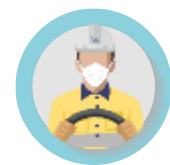


Main international airlines are flying to São Paulo (GRU) or to Rio de Janeiro (GIG) in Brazil. From these airports, a domestic leg to São Luís (SLZ) airport is possible.

All seafarer land transportation needs to be carried out in specific vehicles that adhere to the following conditions:



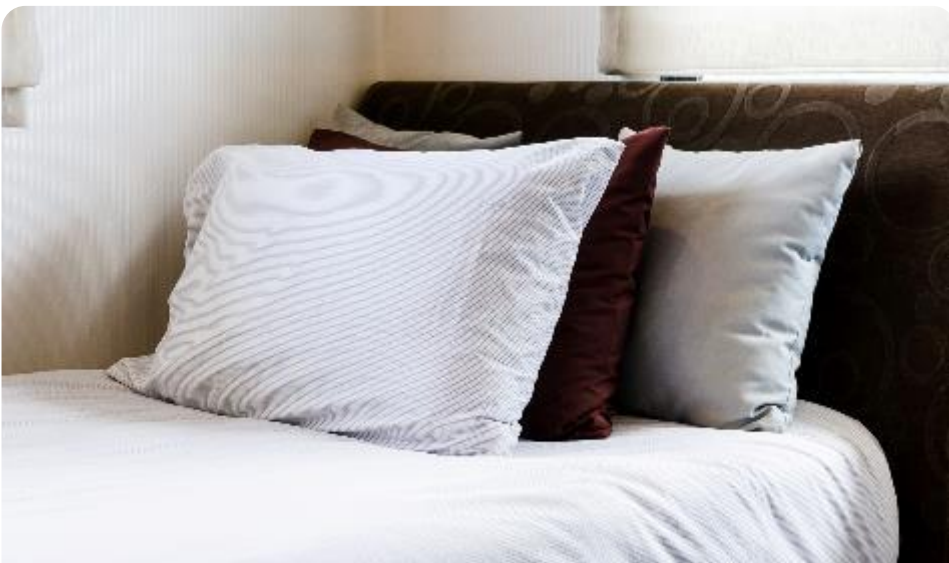
Max transport capacity of 10 pax, to adhere to social distancing safety measures



The driver and all passengers must wear full PPE at all times.



The vehicle is only used to transport seafarers



Hotel Accommodation for Crew Members



On-signers: Only designated hotels are to be used and 14 days of quarantine is mandatory

Off-signers: Preferably go straight to the airport for flight connections



Keep updated with the
latest port restrictions
on our COVID-19
Port Restrictions Map



Note: Recommended
to view on desktop

<https://tinyurl.com/wilhelmsencovid19>

VISIT MAP

Contact Us

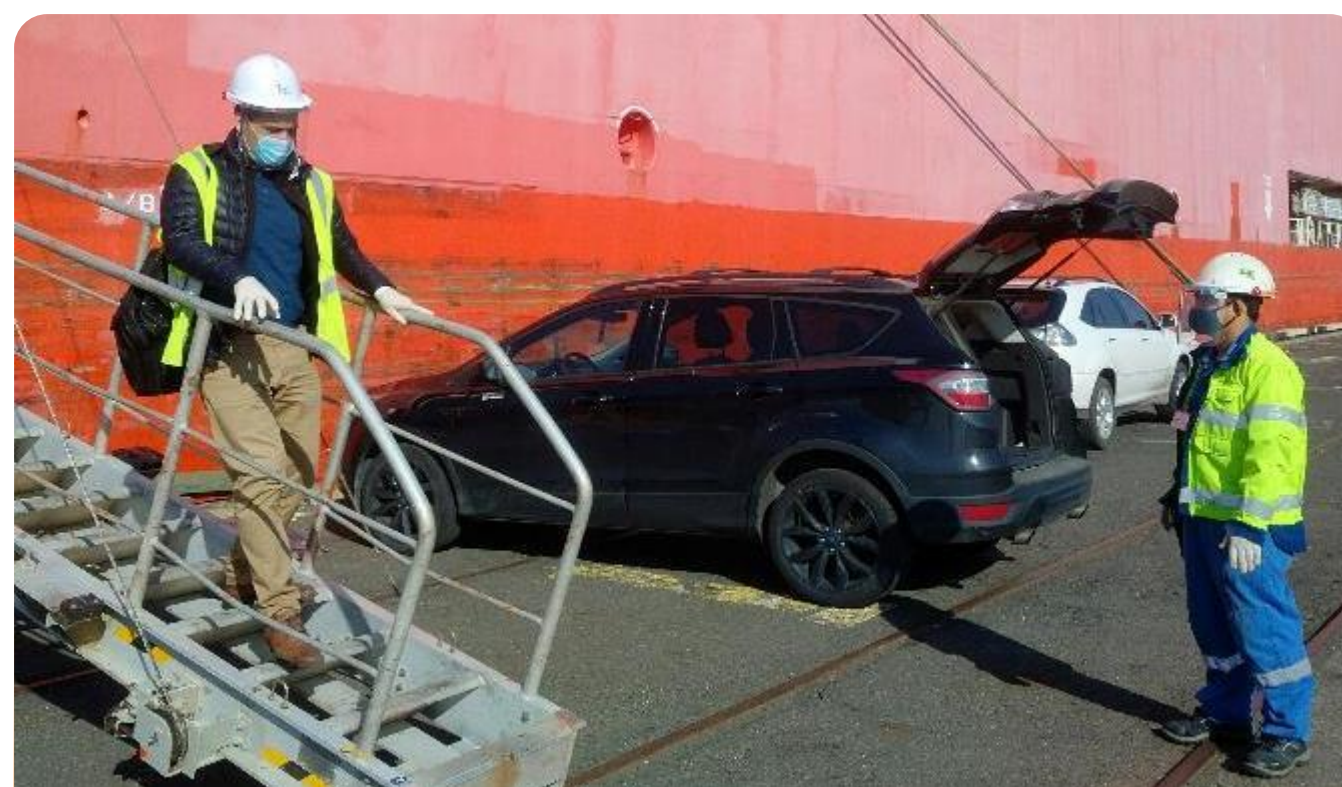
Wilhelmsen Ships Service do Brasil Ltda
Phone: +55 21 996 402 451
E-mail: wss-rio-shipsagency@wilhelmsen.com

UPDATED
ON:
17 JULY
2020

Crew Change Requirements for São Sebastião

PREREQUISITES

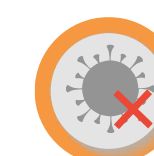
For countries that do not have VISA exemption agreement with Brazil, seafarers must hold a valid seaman's book recognized by ILO Convention 185



Disembarkation



OPL is not allowed



Disembarking crew to provide confirmation that they are free of any COVID-19 symptoms for the past 14 days. A medical consultation will be carried on-board through video call, to issue a certificate allowing the disembarkation.

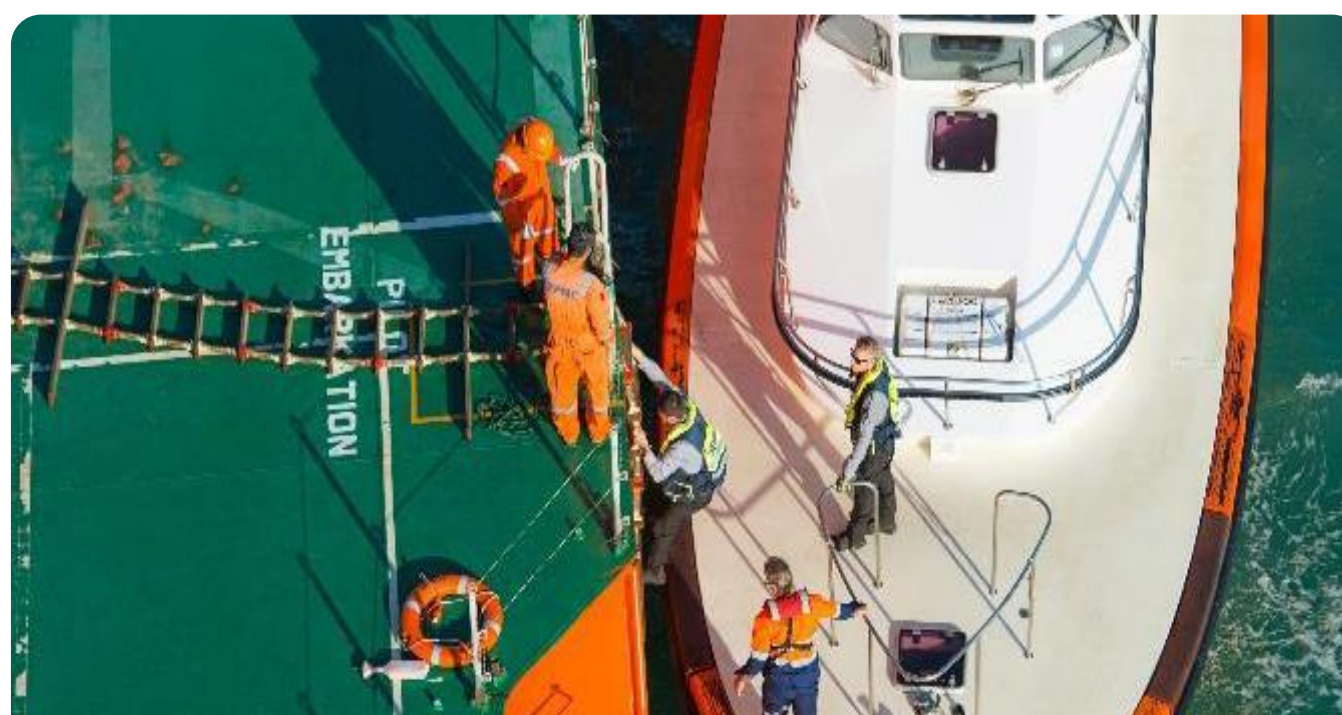


Wilhelmsen Ships Agency will arrange for transportation from vessel to airport in specifically designated vehicles

Brazil Now Open For Crew Change

With dynamic regulations surrounding crew change, it can be cumbersome trying to stay on top of all the latest changes and keeping track of all the documentation requirements.

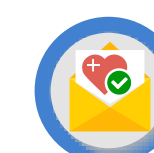
And that's what we are here for – we've got your backs.



Embarking Crew



OPL is not allowed



Embarking crew members must carry with them (and send to Wilhelmsen Ships Agency in advance) a medical report that states they are in good health condition and have been tested negative for COVID-19, before getting on the flight to Brazil.



Wilhelmsen Ships Agency will arrange for transportation from airport to hotel or vessel in specifically designated vehicles



Travel Arrangements for Crew Members



No VISAs are issued in Brazil. The seafarers must hold a valid seaman's book recognized by ILO Convention. OK-TO-BOARD issued by the Agent and the Crew Employment Contract are required before on-signer arrival at São Paulo (GRU).



Main international airlines are flying to São Paulo (GRU) or to Rio de Janeiro (GIG) in Brazil. For São Sebastião port, only GRU is possible.

All seafarer land transportation needs to be carried out in specific vehicles that adhere to the following conditions:



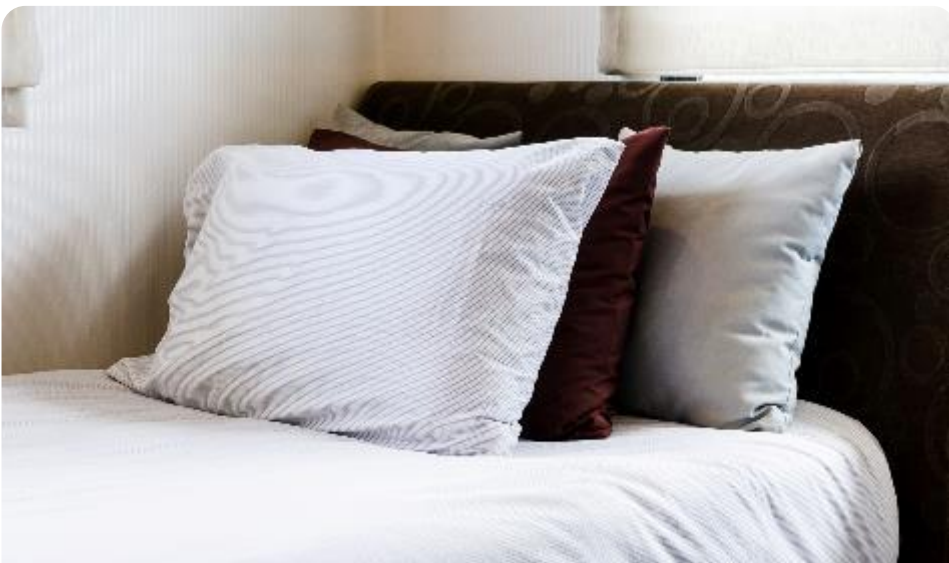
Max transport capacity of 10 pax, to adhere to social distancing safety measures



The driver and all passengers must wear full PPE at all times



The vehicle is only used to transport seafarers



Hotel Accommodation for Crew Members



Hotel stays are allowed for both on-signers and off-signers



Keep updated with the
latest port restrictions
on our COVID-19
Port Restrictions Map



Note: Recommended
to view on desktop

<https://tinyurl.com/wilhelmsencovid19>

VISIT MAP

Contact Us

Wilhelmsen Ships Service do Brasil Ltda

Phone: +55 21 996 402 451

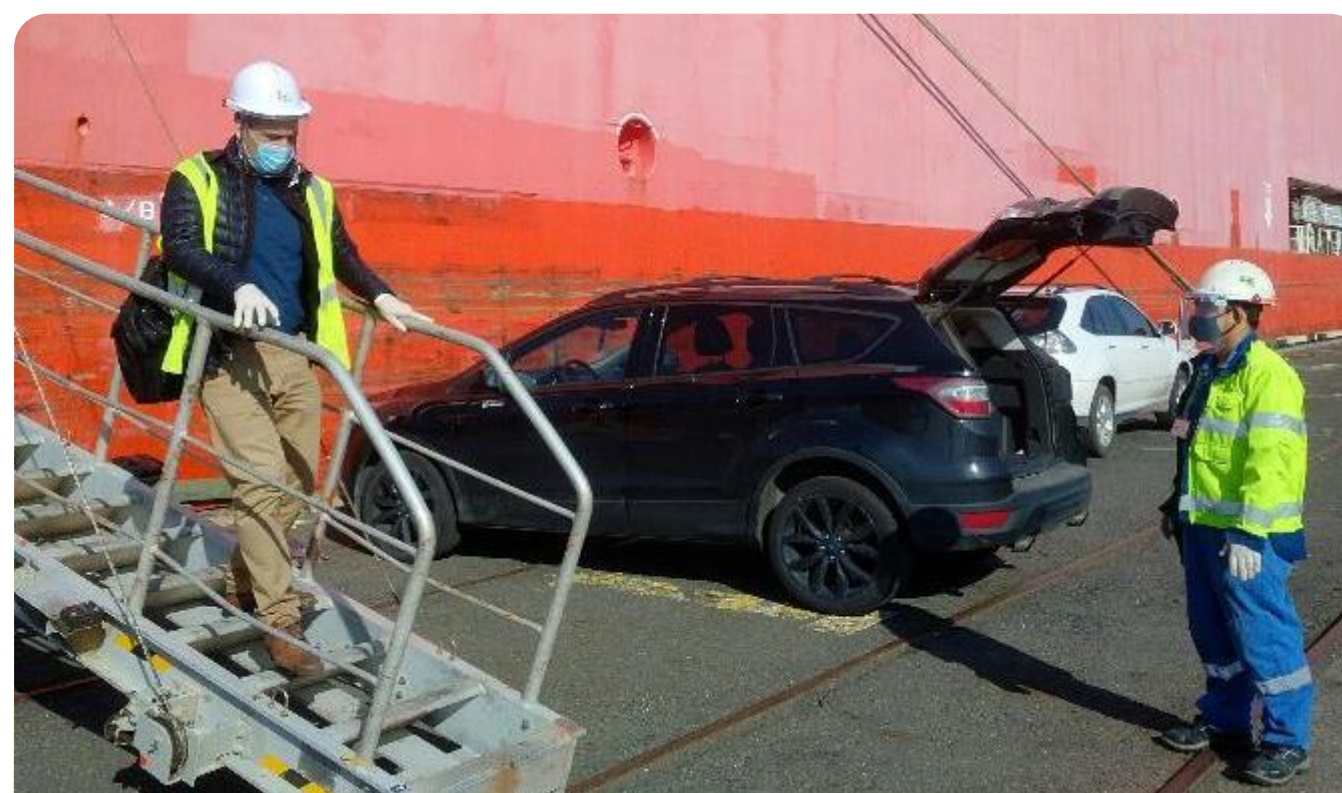
E-mail: wss-rio-shipsagency@wilhelmsen.com

**UPDATED
ON:
17 JULY
2020**

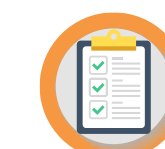
Crew Change Requirements for Uruguay

PREREQUISITES

There are currently no restrictions regarding crew nationality, once the documents are submitted: Passport / Seaman's Book / Full flight schedule with E-Ticket. Although visa is not required by Immigration Authorities, the corresponding authorization (from local Immigration and Health authorities) must be submitted before flight to Uruguay / disembarking from vessel

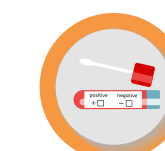


Disembarkation



Necessary documents for off-signers:

- Responsibility letter from Master certifying good health condition of the off-signer
- Temperature control list.



Quarantine is not mandatory for now. COVID-19 test can be requested to be carried out upon disembarkation.

Brazil Now Open For Crew Change

With dynamic regulations surrounding crew change, it can be cumbersome trying to stay on top of all the latest changes and keeping track of all the documentation requirements.

And that's what we are here for – we've got your backs.

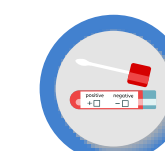


Embarking Crew



Necessary documents for on-signers:

- Responsibility letter from the Owner with full medical report (including regular temperature control list), certifying good health condition of the on-signer / quarantine at home
- Letter from Master guaranteeing that on-signer will have the necessary accommodation and cabin on board to undergo quarantine
- Owners COVID-19 management plan according to IMO
- Circular Letter No.4204/Add.14 Annex



COVID-19 test to be carried out maximum 72 hours prior to departure. On-signers must carry the test results together with personal documents to flight. COVID-19 test can be requested to be carried out for the on-signers upon arrival.



Travel Arrangements for Crew Members

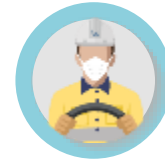


Montevideo Carrasco International Airport (IATA Code MVD)

All seafarer land transportation needs to be carried out in specific vehicles that adhere to the following conditions:



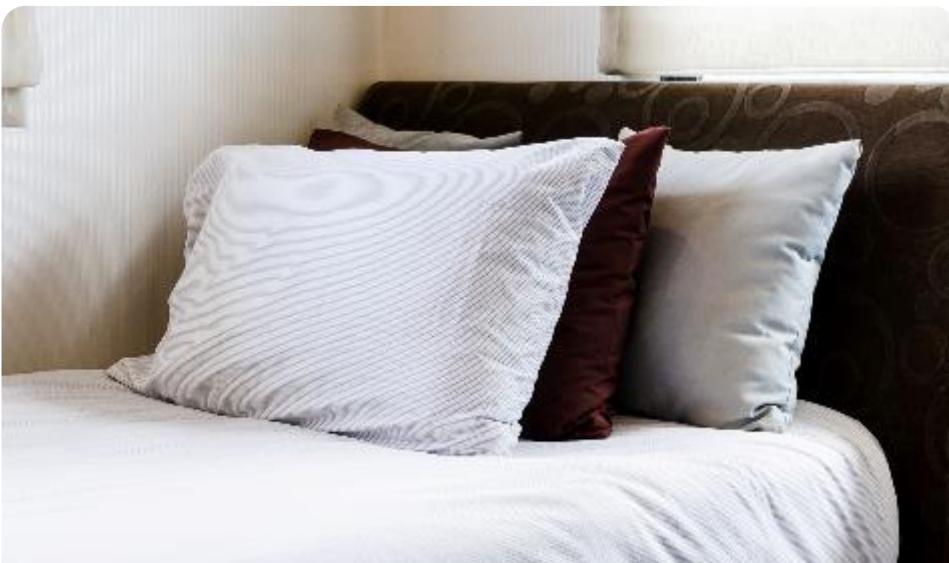
Max transport capacity of 6 pax, to adhere to social distancing safety measures



The driver and all passengers must wear full PPE at all times



Wilhelmsen Ships Agency will arrange for transportation for off-signers from vessel to airport and for on-signers from airport to hotel or vessel in specifically designated vehicles used to transport seafarers only



Hotel Accommodation for Crew Members

Hotel stays are NOT recommended by Authorities. Specific cases will need pending approval from Authorities.



On-signers: Must board the vessel directly upon arrival in Uruguay



Off-signers: Must go straight to the airport for flight connections



Keep updated with the latest port restrictions on our COVID-19 Port Restrictions Map



Note: Recommended to view on desktop

<https://tinyurl.com/wilhelmsencovid19>

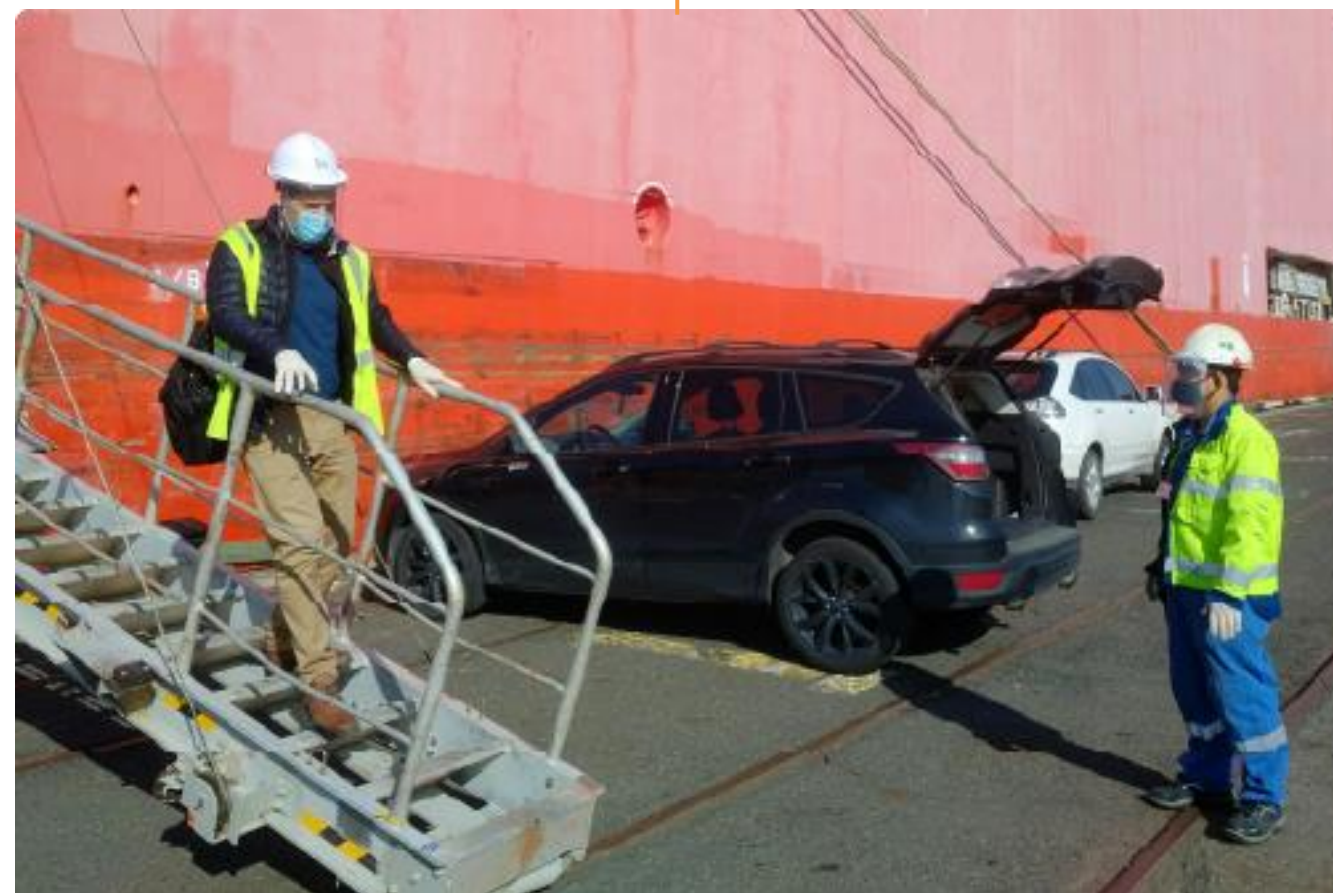
VISIT MAP

Contact Us

Wilhelmsen Ships Service do Brasil Ltda
Phone: +55 13 99687 7001
E-mail: wss.sam.husbandry@wilhelmsen.com

PREREQUISITES

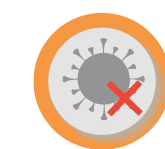
Crew Change is allowed for crew members from ILO 185 signatory countries. For crew members from ILO 108 countries, permission is required from the local Brazilian Consulate before embarkation.



Disembarkation: Off-signers



OPL is allowed, after all health regulations are complied with.



Disembarking crew to provide confirmation that they are free of any COVID-19 symptoms for the past 14 days. Vessel's master to provide official declaration as Port of Call List and Medical Logbook, confirming crew is free of symptoms.



Wilhelmsen Ships Agency will arrange special transportation from Vessel to airport in specifically designated vehicles

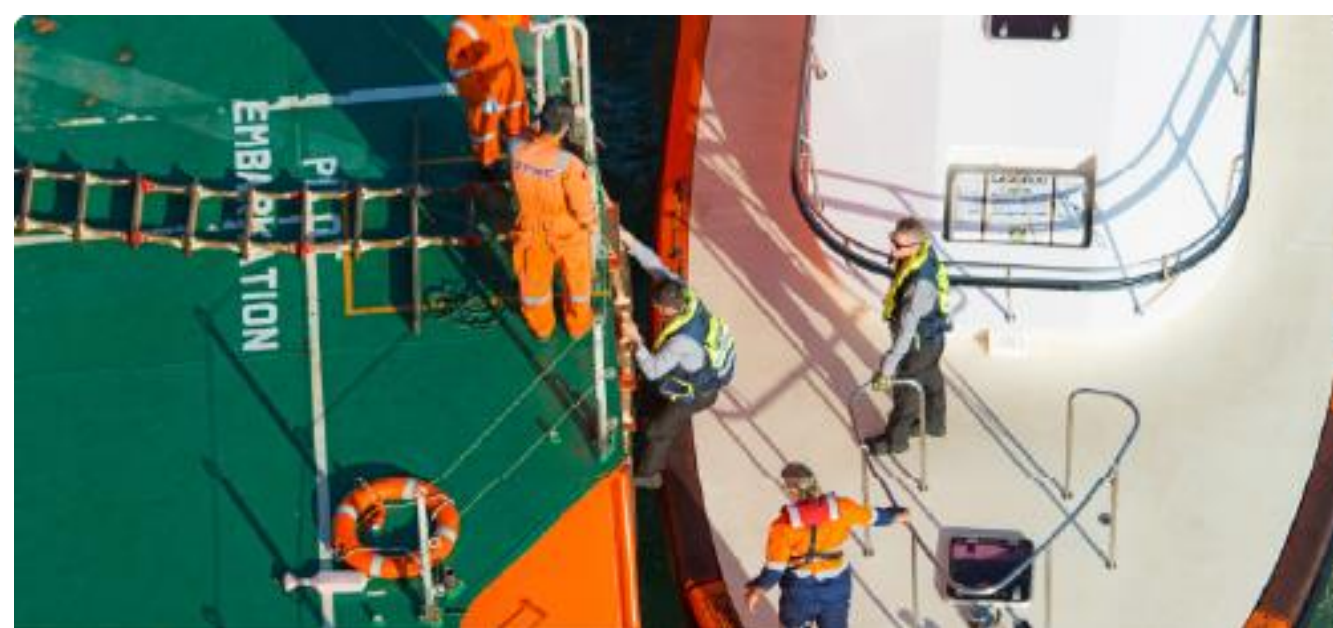


Precautionary measures are taken for launch crew to avoid close contact with disembarking crew

Brazil Now Open For Crew Change

With dynamic regulations surrounding crew change, it can be cumbersome trying to stay on top of all the latest changes and keeping track of all the documentation requirements.

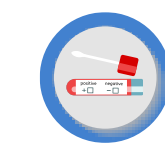
And that's what we are here for – we've got your backs.



Embarking Crew: On-signers



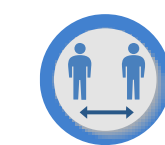
OPL is allowed, after all health regulations are complied with.



14 days quarantine required prior to arrival. Owners are required to send a declaration that quarantine has been completed, crew is free of symptoms, along with crew's COVID-19 test showing negative results. Upon arrival, another rapid test must be performed. Crew should then proceed directly to board vessel.



Wilhelmsen Ships Agency will arrange special transportation from Airport to the Vessel which needs to be carried out in specifically designated vehicles



Precautionary measures taken for launch crew to avoid close contact with embarking crew



Travel Arrangements for Crew Members



No VISAs are issued in Brazil. The seafarers must hold a valid seaman's book recognized by ILO Convention. In addition, OK-TO-BOARD issued by the Agent is required.



Major international airlines are flying to São Paulo (IATA Code GRU) or to Rio de Janeiro (IATA Code GIG) in Brazil. From these airports, domestic flights to other airports are possible.

All seafarer land transportation needs to be carried out in specific vehicles that adhere to the following conditions:



Max transport capacity of 11 pax, to adhere to social distancing safety measures



The driver and all passengers must wear full PPE at all times



The vehicle is only used to transport seafarers



Hotel Accommodation for Crew Members

Hotel stays are NOT recommended by Authorities. This is on a case by case, port by port basis.



On-signers: Preferably to board the vessel directly upon arrival in Brazil



Off-signers: Preferably to go straight to the airport for flight connections



Keep updated with the latest port restrictions on our COVID-19 Port Restrictions Map



Note: Recommended to view on desktop

<https://tinyurl.com/wilhelmsencovid19>

VISIT MAP

Contact Us

Wilhelmsen Ships Service do Brasil Ltda

Phone: +55 27 996 248 485

E-mail: wss.vix.shipsagency@wilhelmsen.com